



Nissan Intelligent Mobility moves you one step ahead. In cars that feel like an extension of you, helping you see more and sense more, reacting with you, and sometimes even for you. Nissan Intelligent Mobility is about a better future – moving through life with greater confidence, excitement and connection to the world around you.



2021
FRONTIER®



¹Cargo shown for display purposes only. Cargo and load capacity limited by weight and distribution. Always secure cargo. Heavy loading of the vehicle with cargo, especially on the roof, will affect the handling and stability of the vehicle. ²Maximum towing capacity when properly equipped. Maximum towing of up to: 6,720 lbs. for Frontier King Cab® 4x2; 6,510 lbs. for Frontier King Cab® 4x4; 6,640 for Frontier Crew Cab 4x2; 6,380 for Frontier Crew Cab 4x4; 6,500 for Frontier Crew Cab Long Bed 4x2; 6,250 for Frontier Crew Cab Long Bed 4x4. Towing capacity varies by configuration. See Nissan Towing Guide and Owner's Manual for additional information. ³Available feature. ⁴Use feature only when safe and legal. Compatible device and service required. Subject to third party service availability. For more information see [NissanUSA.com/connect/legal](https://www.nissanusa.com/connect/legal). ⁵Leather appointments. ⁶Payload varies by configuration. See Nissan Towing Guide and Owner's Manual for additional information. ⁷Comparison based on 2021 Frontier S vs. latest in-market *Ward's* Small Truck segment. Base models compared. Based on manufacturer's website. ⁸2021 EPA Fuel Economy Estimates. 18 City MPG / 24 Highway MPG / 20 Combined MPG for Frontier® 4x2; 17 City MPG / 23 Highway MPG / 19 Combined MPG for Frontier 4x4. Actual mileage may vary with driving conditions. Use for comparison only. ⁹Available feature. *Ward's* Small Pickup Segmentation. 2021 Frontier SV with Value Truck Package and above vs. latest in-market competitors. Comparison based on manufacturer websites. ¹⁰Driving is serious business and requires your full attention. If you have to use the connected device while driving, exercise extreme caution at all times so full attention may be given to vehicle operation. ¹¹Use the text messaging feature after stopping your vehicle in a safe location. If you have to use the feature while driving, exercise extreme caution at all times so full attention may be given to vehicle operation. Compatible smartphone required. Text rates and/or data usage may apply. ¹²RearView Monitor may not detect every object and does not eliminate blind spots or warn of moving objects. See Owner's Manual for safety information. ¹³Vehicle Dynamic Control cannot prevent collisions due to abrupt steering, carelessness, or dangerous driving techniques. It should remain on when driving, except when freeing the vehicle from mud or snow. See Owner's Manual for safety information. ¹⁴Tire Pressure Monitoring System is not a substitute for regular tire pressure checks. See Owner's Manual for safety information. ¹⁵Never program while driving. GPS mapping may not be detailed in all areas or reflect current road status. ¹⁶Sonar System may not detect every object. Driver should always check surroundings before driving. See Owner's Manual for safety information. ¹⁷Towing capability varies by configuration. See Nissan Towing Guide and Owner's Manual for additional information. ¹⁸Genuine Nissan Accessories are covered by Nissan's Limited Warranty on Genuine Nissan Replacement Parts, Genuine NISMO® S-Tune Parts, and Genuine Nissan Accessories for the longer of 12 months/12,000 miles (whichever occurs first) or the remaining period under the 3-year/36,000-mile (whichever occurs first) Nissan New Vehicle Limited Warranty. Terms and conditions apply. See dealer, Warranty Information Booklet, or [parts.NissanUSA.com](https://www.nissanusa.com) for details. ¹⁹Availability may vary. Not warranted by Nissan. Nissan is not responsible for the safety or quality of the installation or alterations made by independent third party vendors. ²⁰Not a genuine Nissan part/accessory. Not warranted by Nissan. Refer to product manufacturer for warranty details. Nissan Limited Warranty does not cover damages or failures to the vehicle caused by improper installation or alterations of any Nissan-approved accessory or component. Contact your dealer for details. ²¹Tool Box Tray shown in photo is sold separately. See your Nissan dealer for more information. ²²Vehicle shown is for illustrative purposes only. Not representative of brochure's model year/model. ²³King Cab, Crew Cab Long Bed, and Crew Cab 4x2 models only. ²⁴4x4 only. ²⁵Air bags are only a supplemental restraint system. Always wear your seat belt. Rear-facing child restraints should not be placed in the front-passenger's seat. All children 12 and under should ride in the rear seat properly secured in child restraints, booster seats, or seat belts according to their size. Air bags will only inflate in certain accidents. See Owner's Manual for safety information. ²⁶Roadside Assistance available for a period of 36 months/36,000 miles from the date the vehicle is delivered to the first retail buyer or otherwise put into use, whichever is earlier. Bilstein® is a registered trademark of ThyssenKrupp Bilstein GmbH. Bluetooth® word mark and logos are owned by Bluetooth SIG, Inc., and any use of such marks by Nissan is under license. Dana® is a registered trademark of Dana Corporation. Facebook® is a registered trademark of Facebook, Inc. HomeLink® is a registered trademark of Gentex Corporation. Rockford Fosgate® is a registered trademark of Rockford Corporation. Siri® and Siri® Eyes Free are registered trademarks of Apple, Inc. The Sirius®, XM®, and SiriusXM® names and all related marks and logos are trademarks of Sirius XM Radio Inc. All other trademarks are the property of their respective owners. Twitter® is a registered trademark of Twitter, Inc. Yakima® is a registered trademark of Yakima Products, Inc. YouTube is a registered trademark of Google LLC. This brochure is intended for general descriptive and informational purposes only. It is subject to change and does not constitute an offer, representation or warranty (express or implied) by Nissan North America, Inc. Interested parties should confirm the accuracy of any information in this brochure as it relates to a vehicle directly with Nissan North America, Inc., before relying on it to make a purchase decision. Nissan North America, Inc., reserves the right to make changes, at any time, without prior notice, in prices, colors, materials, equipment, specifications, and models and to discontinue models or equipment. Due to continuous product development and other pre- and post-production factors, actual vehicle, materials and specifications may vary from this brochure. Some vehicles shown with optional equipment. See the actual vehicle for complete accuracy. Availability and delivery times for particular models or equipment may vary. Specifications, options and accessories may differ in Hawaii, U.S. territories and other countries. For additional information on availability, options or accessories, see your Nissan dealer or contact Nissan North America, Inc. At [NissanUSA.com](https://www.nissanusa.com), you'll find virtual product demonstrations, a way to "build your own Nissan," a dealer locator, and more information about key Nissan support services. Or if you'd prefer, call 1-800-NISSAN-3 for answers to specific questions about Frontier® or any other Nissan vehicle. The Nissan names, logos, product names, feature names, and slogans are trademarks owned by or licensed to Nissan Motor Co. Ltd. and/or its North American subsidiaries. Other trademarks and trade names are those of their respective owners. **Always wear your seat belt, and please drive responsibly.** ©2021 Nissan North America, Inc. ²¹Frontier®

DEALER ePROCESS



Get ready to tackle the big jobs with 310 horsepower and a 9-speed automatic. And that means loads of capability, work or play. On-road or off. So load it up.¹ Hitch it up – and make bigger plans. The 2021 Nissan Frontier.[®]

310
HORSEPOWER

281
LB-FT OF TORQUE

UP TO
6,720
LBS. MAX TOWING²

Nissan Frontier[®] King Cab[®] SV 4x2 shown with optional equipment.





Surround yourself with the best

Whether you're on the job or on the go, Frontier® offers features that take things up a notch. Embrace a great-looking interior with standard Push Button Ignition, plus an available sporty, leather-wrapped steering wheel with cruise control and audio adjustments. Crank up the ten-speaker Rockford Fosgate®-powered audio.³ Make and take calls with your hands on the wheel using the Bluetooth® Hands-free Phone System.⁴ And get things the way you like it with available Dual Zone Automatic Temperature Control.

DE
DEALER ePROCESS

Nissan Frontier® Crew Cab PRO-4X® shown in Graphite Leather.⁵

A full truckload of capability

Thanks to the 310-hp, 3.8-L V6, the 2021 Frontier® features plenty of payload and a maximum towing capacity of up to 6,720 lbs. Add in a full line of Genuine Nissan Towing Accessories, and you have a powerful choice for just about anything you need to do.^{2, 6}



Nissan Frontier® King Cab® SV 4x2 shown.

4x4 Capability

With the available 4x4 system, you can choose between 2WD, 4H, and 4LO, to help maximize fuel efficiency on the highway⁸ and get serious off-road capability on command. Available four-wheel Active Brake Limited Slip (ABLS), hill start assist and hill descent control help you conquer even the roughest terrain.



PRO-4X



Bilstein® shocks

All-terrain tires

Electronic locking rear differential

Skid plates

Best-in-class standard power

Pumping out a massive 310 hp, Frontier's standard V6 is a powerhouse. Featuring responsive direct injection, and backed by a 9-speed automatic transmission. It's got performance you can depend on, day-in, day-out.⁷



3.8-L V6 | 310 | 281
ENGINE | HORSEPOWER | LB-FT OF TORQUE

Four walls are stronger than three

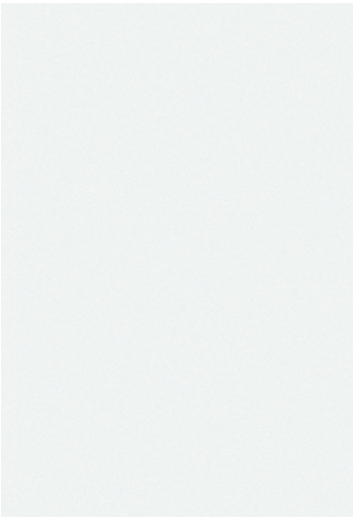
Because four walls are stronger than three, Frontier features a full-length, fully boxed ladder frame. The frame is built with welded crossmembers and features super-high-tensile-strength steel. Stronger than conventional steel for increased torsional stiffness, it helps deliver improved performance, on- and off-road.



Put your cargo on lockdown

When equipped with the available Utili-track® Channel System, Frontier offers the most bed rails in its class.^{1, 9} This system is fully equipped to help keep just about any type of cargo secured. Five channels, four cleats, and a lot of thought about how people really use their trucks have created a system that's simple, rugged, and offers near-infinite possibilities.¹

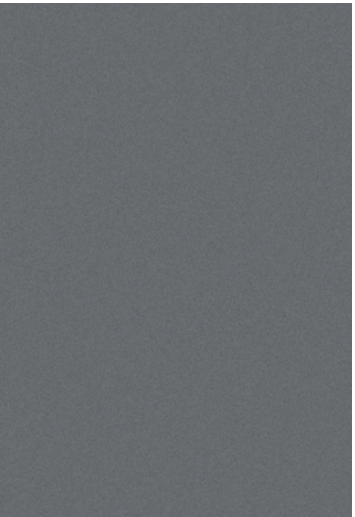
CHOOSE YOUR COLOR



Glacier White



Brilliant Silver Metallic

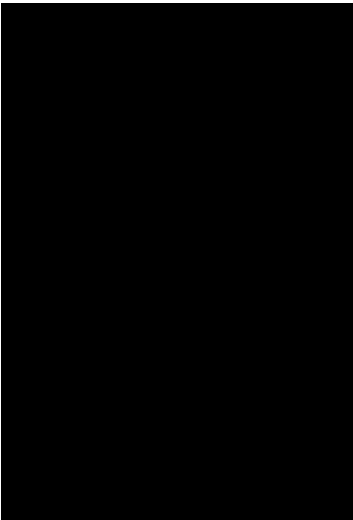


Gun Metallic

	KING CAB		CREW CAB		
	S	SV	S	SV	PRO-4X
STEEL CLOTH	■		■	■	
GRAPHITE CLOTH		■			
GRAPHITE LEATHER ⁵					■

	KING CAB		CREW CAB		
	S	SV	S	SV	PRO-4X
STEEL CLOTH	■		■	■	
GRAPHITE CLOTH	■	■			
GRAPHITE LEATHER ⁵					■

	KING CAB		CREW CAB		
	S	SV	S	SV	PRO-4X
STEEL CLOTH				■	
GRAPHITE CLOTH		■			
GRAPHITE LEATHER ⁵					■



Magnetic Black Pearl



Arctic Blue Metallic



Cayenne Red Metallic

	KING CAB		CREW CAB		
	S	SV	S	SV	PRO-4X
STEEL CLOTH	■		■	■	
GRAPHITE CLOTH	■	■			
GRAPHITE LEATHER ⁵					■

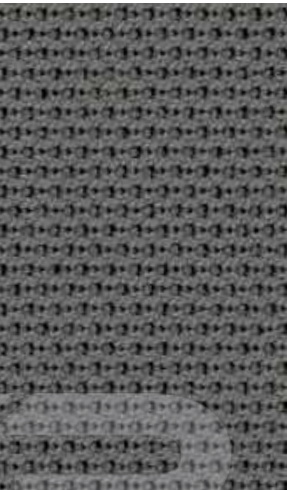
	KING CAB		CREW CAB		
	S	SV	S	SV	PRO-4X
STEEL CLOTH				■	
GRAPHITE CLOTH		■			
GRAPHITE LEATHER ⁵					■

	KING CAB		CREW CAB		
	S	SV	S	SV	PRO-4X
STEEL CLOTH	■	■	■	■	
GRAPHITE CLOTH					
GRAPHITE LEATHER ⁵					■

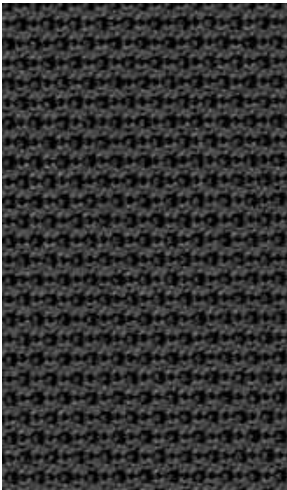
CHOOSE YOUR INTERIOR



Nissan Frontier® Crew Cab PRO-4X® shown in Graphite Leather.⁵



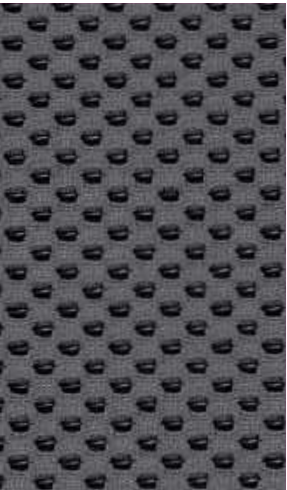
Steel Cloth
S King Cab®



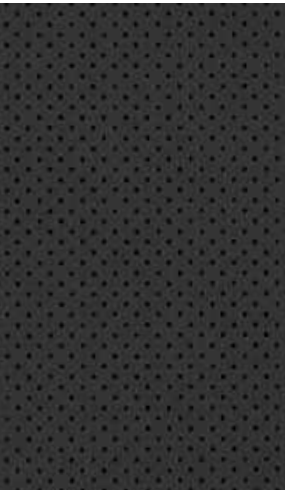
Graphite Cloth
S King Cab



Graphite Cloth
SV King Cab



Steel Cloth
S | SV Crew Cab

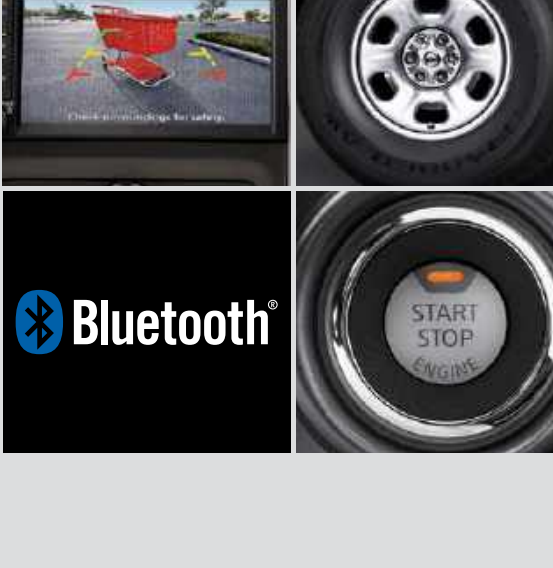



Graphite Leather⁵
PRO-4X Crew Cab

■ Standard

Nissan has taken care to ensure that the digital color swatches presented here are the closest possible representation of actual vehicle colors. Swatches may vary slightly due to viewing light or screen quality. Please see the actual vehicle and colors at your dealer.

CHOOSE YOUR TRIM LEVEL

S	KING CAB®	CREW CAB
	<ul style="list-style-type: none"> • 3.8-liter V6 Direct Injection Gasoline engine with 310 hp and 281 lb-ft of torque • 9-speed automatic transmission • 16" 6-spoke steel wheels • Active Brake Limited Slip (ABLS) • Full-length and fully boxed ladder frame • 7" color touch-screen display • AM/FM audio system with four speakers • USB port¹⁰ • Bluetooth® Hands-free Phone System⁴ • Hands-free Text Messaging Assistant¹¹ • Streaming Audio via Bluetooth®⁴ <p>Crew Cab adds:</p> <ul style="list-style-type: none"> • Four full-size doors with seating for five • 60/40-split flip-up rear bench seat • AM/FM audio system with six speakers <p>4x4 adds:</p> <ul style="list-style-type: none"> • Switch-operated 2-speed transfer case • Hill start assist • Hill descent control 	<ul style="list-style-type: none"> • Siri® Eyes Free⁴ • RearView Monitor¹² • Illuminated steering wheel-mounted audio and cruise controls • Remote Keyless Entry with Push Button Ignition • Power door locks • Power windows with driver's one-touch auto-down • Rear access doors • Second-row under-seat storage • Vehicle Dynamic Control (VDC)¹³ • Tire Pressure Monitoring System (TPMS)¹⁴ 

SV	KING CAB	CREW CAB	CREW CAB LONG BED
<p>SV includes S equipment plus:</p> <ul style="list-style-type: none"> ▪ 16" 6-split spoke aluminum-alloy wheels ▪ Body-color front bumper ▪ Chrome rear bumper ▪ Bed rail caps <p>Crew Cab adds:</p> <ul style="list-style-type: none"> ▪ Four full-size doors with seating for five ▪ 60/40-split flip-up rear bench seat ▪ AM/FM audio system with six speakers <p>4x4 adds:</p> <ul style="list-style-type: none"> ▪ Switch-operated 2-speed transfer case ▪ Hill start assist ▪ Hill descent control <p>AVAILABLE PACKAGES:</p> <p>Value Truck Package, Midnight Edition® Package (Crew Cab only), Special Edition Package (Crew Cab only)</p>			
<ul style="list-style-type: none"> ▪ Sliding rear window ▪ Dual power outside mirrors ▪ Sun visors with vanity mirrors and extension 			
			

PRO-4X® CREW CAB

- Bilstein® off-road performance shocks
- Electronic locking rear differential
- Skid plates
- 16" 6-spoke aluminum-alloy wheels with all-terrain tires
- Automatic on/off headlights
- Fog lights
- Utili-track® Channel System with four adjustable tie-down cleats¹
- Factory-applied spray-on bedliner
- Satin chrome grille
- Body-color rear bumper and outside mirrors
- PRO-4X® bedside decal
- Heated outside mirrors
- Power sliding glass moonroof
- Roof rack with crossbars¹
- NissanConnect® 5.8" color touch-screen display⁴
- Nissan Navigation System¹⁵
- Nissan Mobile Partner⁴
- Voice Recognition¹⁵
- SiriusXM® Traffic and Travel Link with 3-month trial access⁴

- SiriusXM® Radio with 3-month subscription included⁴
- Rear Sonar System¹⁶
- Dual Zone Automatic Temperature Control
- PRO-4X embroidered leather-appointed seats
- 8-way power adjustable driver's seat
- 4-way power adjustable front-passenger's seat
- Heated front seats
- Rear fold-down center armrest
- White-faced gauges with satin chrome bezels
- Auto-dimming rearview mirror with digital compass and outside temperature display
- Rockford Fosgate®-powered audio system with ten speakers, including subwoofer

CHOOSE YOUR PACKAGE



VALUE TRUCK PACKAGE | SV

- Available on SV King Cab,[®] Crew Cab, and Crew Cab Long Bed

 - Rear Sonar System¹⁶
 - Dual Zone Automatic Temperature Control
 - Utili-track[®] Channel System with four adjustable tie-down cleats¹
 - Spray-on bedliner
 - Sliding bed extender
 - Tow hitch receiver, Class IV¹⁷
- Fog lights
 - Six speakers (King Cab only)
 - Auto-dimming rearview mirror with digital compass and outside temperature display
 - Heated front seats
 - Vehicle Security System

*Value Truck Package is standard on Crew Cab Long Bed 4x2



SPECIAL EDITION | SV

- Available on SV Crew Cab. Includes Value Truck Package contents

 - 18" x 7.5" 6-spoke aluminum-alloy wheels
 - Satin chrome grille
- Body-color rear bumper
 - Special Edition decals
 - Multi-functional trip computer



MIDNIGHT EDITION[®] | SV

- Available on Crew Cab. Includes Value Truck Package contents

 - Exclusive Midnight Edition black 18" alloy wheels
 - Black front grille
 - Body-color rear bumper
- Black door handles and outside mirrors
 - Black step rails
 - Black Midnight Edition badging

CHOOSE YOUR ACCESSORIES



- A. **18" Midnight Edition® Wheels**
Stand out in bold style.
- B. **Bed Rail Caps¹⁹**
Protect your bed rails from a thrashing.
- C. **Special Edition Graphics Package**
Special Edition decals add flair to the exterior.
- D. **Sliding Bed Divider¹**
Divide and conquer. Works perfectly with Utili-track® Channel System.
- E. **Hitch Ball Mount and Hitch Ball, Class III¹⁷**
Ready for towing up to 5,000 lbs. (sold separately).
- F. **All-Season Floor Mats**
Don't let the muck mess up your truck.
- G. **Body Side Moldings and Step Rails**
Protect your doors and get a lift (sold separately).
- H. **Splash Guards**
Show that puddle who's the boss.

Additional Accessories:

- Midnight Edition Carpeted Floor Mats
- Under-seat Storage Tray Nets¹
- Frameless Prizm Rearview Mirror with Universal Remote
- Trailer Tow Harness¹⁷
- Hitch Cap¹⁷
- Affiliated: Yakima® FullTilt 4 Bike Rack^{1, 20}
- Affiliated: Yakima® HoldUp Bike Rack^{1, 20}
- And More

For more information and to shop online for Frontier® Genuine Nissan Accessories, go to bit.ly/21Frontier-Accys

NISSAN FRONTIER® ACCESSORIES

Turn brand-new into all you

Every Genuine Nissan Accessory is custom-fit, custom-designed and durability-tested. Each one is backed by Nissan's 3-year/36,000-mile (whichever occurs first) limited warranty (if installed by dealer at the time of purchase), and can be financed when installed by dealer at time of purchase.¹⁸ Affiliated Yakima® accessories are not warranted by Nissan. Refer to product manufacturer for warranty details. Nissan Limited Warranty does not cover damages or failures to the vehicle caused by improper installation or alterations of any Nissan approved accessory or component. Contact your dealer/retailer for details.



Nissan Frontier® Crew Cab PRO-4X® shown in Brilliant Silver Metallic with PRO-4X Graphics Package, Fog Lights (standard on PRO-4X), Tow Hook (standard on PRO-4X), and Splash Guards (standard on PRO-4X).

CHOOSE YOUR ACCESSORIES



- A. **Weight-distributing Hitch Ball Mount, Class IV¹⁷**
Tow big or go home.
- B. **PRO-4X[®] Carpeted Floor Mats**
It's the ultimate Frontier. Treat it right.
- C. **Sliding Tool Box²¹**
Slide it forward when you're on the move. Slide it back for easy access on the job.
- D. **Clear Door Edge Protectors²²**
Keep the edge of your doors looking like new.
- E. **Bedliner**
Because your bed takes a beating.
- F. **Tow Hook**
Extra strength for sticky situations.
- G. **Bed Tent**
It's your truck! It's your campsite! It's both!
- H. **Sliding Bed Extender¹**
Ideal for the long haul.

For more information and to shop online for Frontier[®] Genuine Nissan Accessories, go to bit.ly/21Frontier-Accys

NISSAN FRONTIER[®] ACCESSORIES

Turn brand-new into all you

Along with the other hard-working accessories listed below, you'll find a full line of available accessories designed specifically to work with the available unique system of channels and cleats in Frontier's incredibly versatile Utili-track[®] Channel System.¹ Affiliated Yakima[®] accessories are not warranted by Nissan. Refer to product manufacturer for warranty details. Nissan Limited Warranty does not cover damages or failures to the vehicle caused by improper installation or alterations of any Nissan approved accessory or component. Contact your dealer/retailer for details.



Nissan Frontier[®] Crew Cab PRO-4X[®] shown in Brilliant Silver Metallic with PRO-4X Graphics Package, Sliding Bed Extender,¹ Sliding Tool Box,²¹ and Splash Guards (standard on PRO-4X).

SPECIFICATIONS

Engine	King Cab®		Crew Cab		
	S	SV	S	SV	PRO-4X®
3.8-liter Direct Injection Gasoline (DIG) DOHC 24-valve V6 engine	■	■	■	■	■
Horsepower – 310 hp @ 6,400 rpm	■	■	■	■	■
Torque – 281 lb-ft of torque @ 4,400 rpm	■	■	■	■	■

Drivetrain					
9-speed automatic transmission	■	■	■	■	■
Dana® 44 rear axle					■
Switch-operated 2-speed transfer case 4x4 ²³	□	□	□	□	■
Electronic locking rear differential					■

Brakes					
Front and rear vented disc brakes	■	■	■	■	■
4-wheel Anti-lock Braking System (ABS)	■	■	■	■	■
Electronic Brake force Distribution (EBD)	■	■	■	■	■

Suspension/Steering					
Independent double-wishbone front suspension with stabilizer bar	■	■	■	■	■
Overslung multi-leaf rear suspension with solid axle	■	■	■	■	■
Bilstein® off-road performance shock absorbers					■
Engine-speed-sensitive power steering	■	■	■	■	■

Driver Assistance Technologies					
Cruise control	■	■	■	■	■
RearView Monitor ¹²	■	■	■	■	■
Rear Sonar System ¹⁶		VT		VT	■
Hill start assist ²⁴	□	□	□	□	■
Hill descent control ²⁴	□	□	□	□	■
Vehicle Dynamic Control (VDC) with Traction Control System (TCS) ¹³	■	■	■	■	■
Active Brake Limited Slip (ABLS)	■	■	■	■	■

Wheels/Tires					
16" x 7.0" 6-spoke steel wheels	■		■		
16" x 7.0" 6-split spoke aluminum-alloy wheels		■		■	
16" x 7.0" 6-spoke aluminum-alloy wheels					■
18" x 7.5" 6-spoke aluminum-alloy wheels				SE	
Exclusive Midnight Edition® black 18" x 7.5" aluminum-alloy wheels				ME	
265/70R16 all-season tires	■	■	■	■	
265/75R16 all-terrain tires					■
265/60R18 all-season tires				SE/ME	

Chassis					
Body-on-frame construction	■	■	■	■	■
Full-length, fully boxed ladder frame	■	■	■	■	■

Exterior Features					
Skid plates – oil pan, fuel tank, 4x4 transfer case					■
Automatic on/off headlights					■
Fog lights		VT		VT	■
Roof rack with crossbars ¹					■
Black step rails				ME	

Exterior Features (continued)	King Cab®		Crew Cab		
	S	SV	S	SV	PRO-4X®
Front tow hook ²⁴	□	□	□	□	■
Splash guards	□	□	□	□	■
Chrome grille	■	■	■		
Satin chrome grille				SE	■
Black front grille				ME	
Upper body-color/lower black front bumper	■		■		
Body-color front bumper		■		■	■
Chrome rear bumper		■		■	
Body-color rear bumper	■		■	SE/ME	■
Black door handles and mirrors	■	■	■	■	
Black door handles and body-color outside mirrors					■
Black Midnight Edition® badging				ME	
Dual power outside mirrors		■		■	■
Heated outside mirrors					■
Rear access doors	■	■			
Four full-size doors			■	■	■
Power sliding glass moonroof with tilt feature					■
Sliding rear window		■		■	■
Rear privacy glass	■	■	■	■	■
Tow Hitch Receiver, Class IV ¹⁷		VT		VT	
Long Bed				□	
Utili-track® Channel System with four adjustable tie-down cleats ¹		VT		VT	■
Factory-applied spray-on bedliner		VT		VT	■
Locking tailgate and cargo bed light	■	■	■	■	■
Tailgate spoiler	■	■	■	■	■
Bed rail caps		■		■	■
Sliding bed extender ¹		VT		VT	
Front UV-reducing solar glass	■	■	■	■	■
Rear window defroster			■		
Special Edition decals				SE	

Comfort/Convenience					
Air conditioning	■	■	■	■	
Dual Zone Automatic Temperature Control		VT		VT	■
In-cabin microfilter	■	■	■	■	■
Power door locks	■	■	■	■	■
Power windows with driver's one-touch auto-down	■	■	■	■	■
Remote Keyless Entry with Push Button Ignition	■	■	■	■	■
Variable intermittent windshield wipers	■	■	■	■	■
Auto-dimming rearview mirror with digital compass and outside temperature display		VT		VT	■
Front map lights	■	■	■	■	■
Two 12-volt DC power outlets ¹⁰	■	■	■	■	■
Multi-functional trip computer				SE	■
Sun visors with vanity mirrors and extension		■	■	■	■
Tilt steering column	■	■	■	■	■
Second-row under-seat storage	■	■	■	■	■
Overhead console with sunglasses storage	■	■	■	■	■
First-aid kit					■

Seating/Appointments	King Cab®		Crew Cab		
	S	SV	S	SV	PRO-4X®
8-way power adjustable driver's seat					■
4-way power adjustable passenger's seat					■
Driver's seat adjustable lumbar support					■
Forward-facing rear flip-up seats	■	■			
60/40-split flip-up rear bench seat			■	■	■
Rear fold-down center armrest					■
Cloth seat trim	■	■	■	■	
PRO-4X® embroidered leather-appointed seats					■
White contrast interior stitching					■
Heated front seats		VT		VT	■
Leather-wrapped steering wheel					■
Chrome vent accents					■
White-faced gauges with satin chrome bezels					■

Infotainment					
7" color touch-screen display	■	■	■	■	
NissanConnect® 5.8" color touch-screen display ⁴					■
Nissan Navigation System ¹⁵					■
Nissan Mobile Partner ⁴					■
SiriusXM® Traffic and Travel Link with 3-month trial access ⁴					■
Voice Recognition ¹⁵					■
Siri® Eyes Free ⁴	■	■	■	■	■
Hands-free Text Messaging Assistant ¹¹	■	■	■	■	■
Bluetooth® Hands-free Phone System ⁴	■	■	■	■	■
AM/FM audio system with four speakers	■	■			
AM/FM audio system with six speakers		VT	■	■	
Rockford Fosgate®-powered audio system with ten speakers, including subwoofers					■
Steering wheel-mounted audio controls	■	■	■	■	■
USB port ¹⁰	■	■	■	■	■
SiriusXM® Radio with 3-month subscription included ⁴					■
Streaming Audio via Bluetooth® ⁴	■	■	■	■	■

Safety/Security					
Nissan Advanced Air Bag System with dual-stage supplemental front air bags with seat belt and occupant-classification sensors ²⁵	■	■	■	■	■
Driver and front-passenger seat-mounted side-impact supplemental air bags ²⁵	■	■	■	■	■
Roof-mounted curtain supplemental air bags for side-impact with rollover sensor ²⁵	■	■	■	■	■
3-point ALR/ELR passenger seat belt (ELR for driver)	■	■	■	■	■
Front-seat Active Head Restraints	■	■	■	■	■
Front seat belts with pretensioners and load limiters	■	■	■	■	■
LATCH System (Lower Anchors and Tethers for Children)	■	■	■	■	■
Zone Body construction with front and rear crumple zones	■	■	■	■	■
Hood buckling creases and energy-absorbing steering column	■	■	■	■	■
Pipe-style steel side-door guard beams	■	■	■	■	■
Tire Pressure Monitoring System (TPMS) ¹⁴	■	■	■	■	■
Nissan Vehicle Immobilizer System		■		■	■
Vehicle Security System		■		■	■

CAPACITIES/TOWING/PAYLOAD/MPG

Capacities	King Cab	Crew Cab
Seating capacity	4	5
Interior passenger volume (cu. ft.)	92	107
Fuel tank (gals.)	21.1	21.1

Maximum Towing – Lbs. ¹⁷			
	S	SV	PRO-4X
King Cab 4x2	6,620	6,720	–
King Cab 4x4	6,370	6,510	–
Crew Cab 4x2	6,620	6,640	–
Crew Cab 4x4	6,370	6,380	6,290
Crew Cab Long Bed 4x2	–	6,500	–
Crew Cab Long Bed 4x4	–	6,250	–

Maximum Payload – Lbs. ⁶			
	S	SV	PRO-4X
King Cab 4x2	1,460	1,430	–
King Cab 4x4	1,340	1,360	–
Crew Cab 4x2	1,460	1,460	–
Crew Cab 4x4	1,340	1,360	1,020
Crew Cab Long Bed 4x2	–	1,360	–
Crew Cab Long Bed 4x4	–	1,220	–

2021 EPA Fuel Economy Estimates ⁸			
City/Hwy/Combined MPG			
4x2 (4x4)	18/24/20 (17/23/19)		

NISSAN ROADSIDE ASSISTANCE

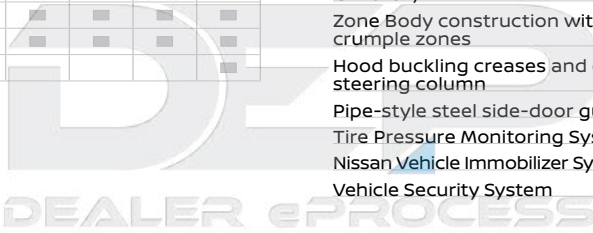
Your peace of mind is on us. For 36 months or 36,000 miles, whichever comes first, your new Nissan is covered for the following:²⁶

- Flat-tire changes
- Trip Interruption benefits
- Jump starts
- Vehicle lockouts
- Emergency fuel delivery

Follow Nissan on:



visit NissanUSA.com/frontier





Sign up to get the latest on
Nissan vehicles, news, and events.

<https://www.nissanusa.com/brochures/request-brochure.html>

