

## NISSAN INTELLIGENT MOBILITY™

Nissan Intelligent Mobility guides everything we do. We're using new technologies to transform cars from mere driving machines into partners. Together the journey is more confident, connected, and exciting. Whether it's cars that share the task of driving with you, or highways that charge your EV as you go along, it's all in the very near future. And it's a future already taking shape in the Nissan you drive today.

<sup>1</sup>Available feature. <sup>2</sup>Intelligent All-Wheel Drive cannot prevent collisions or provide enhanced traction in all conditions. Always monitor traffic and weather conditions. <sup>3</sup>Driving is serious business and requires your full attention. If you have to use the connected device while driving, exercise extreme caution at all times so full attention may be given to vehicle operation. <sup>4</sup>Availability of features vary by vehicle model year, model, trim level, packaging, and options. Please see Owner's Manual for important feature information. <sup>5</sup>Provincial laws may apply. Review before using. <sup>6</sup>Feature availability is dependent on vehicle model, trim level, packaging and options. Compatible connected device may be required and feature availability may be dependent on device's capability. Refer to connected device's Owner's Manual for details. Late availability for some features. Driving is serious business and requires your full attention. Only use features and connected devices when safe and legal to do so. Some features, including automatic crash notification and SOS, are dependent upon the telematics device being in operative condition, its ability to connect to a wireless network, compatible wireless network availability, navigation map data and GPS satellite signal receptions, the absence of which can limit or prevent the ability to reach Customer Care or receive support. GPS mapping may not be detailed in all areas or reflect current road status. Never program GPS while driving. Only use Remote Engine Start and Remote Horn features in accordance with any laws, rules or ordinances in effect in your vehicle's location. Some services and features are provided by independent companies not within Nissan's control. **Should service provider terminate or restrict service or features, service or features may be suspended or terminated without notice or with no liability to Nissan or its partners or agents.** Services and features may require compatible cellular network provided by independent companies not within Nissan or its partners' or agents' control. Cellular network signal strength may vary and may not be available in all areas or at all times. Services and features may not function if cellular network is unavailable, restricted, or terminated. Nissan and its partners or agents are not responsible for associated costs or other third party changes that may be required for continued operation due to cellular network unavailability, restriction, or termination (including equipment replacements/upgrades, if available, or roaming charges on alternative networks). Technology is evolving, and changes by independent companies are not within Nissan's or its partners' or agents' control. Enrollment, owner consent, personal identification number (PIN), and subscription agreement may be required to receive full suite of features and services. Trial periods (if applicable) begin on the date of vehicle purchase or lease of a new Nissan. Trial periods may be subject to change at any time and may be subject to early termination without notice. Required subscriptions may be sold separately for each available feature or service after trial period ends, and may continue until you call service provider to cancel. Installation costs, one-time activation fee, other fees and taxes may apply. Fees and programming subject to change. Feature may be subject to age restrictions in some areas. Subscriptions governed by service provider's subscription agreement, terms and conditions and privacy statements available at service provider's website. Text rates or data usage may apply. The Nissan names, logos and slogans are trademarks owned by or licenced to Nissan Motor Co. Ltd. or its North American subsidiaries. Other trademarks and trade names are those of their respective owners. **For important safety information, system limitations, and additional operating and feature information, see Dealer or Owner's Manual.** <sup>7</sup>Use Hands Free Text Messaging when parked in a safe location. If you must use while driving, monitor traffic conditions and keep both hands on the steering wheel to prevent collisions. Compatible device required. Message and data rates may apply. <sup>8</sup>Cargo shown for display purposes only. Cargo and load capacity limited by weight and distribution. Always secure cargo. Heavy loading of the vehicle with cargo, especially on the roof, will affect the handling and stability of the vehicle. <sup>9</sup>Intelligent Emergency Braking and Intelligent Emergency Braking with Pedestrian Detection cannot prevent all collisions and may not provide warning or braking in all conditions. Driver should monitor traffic conditions and brake as needed to prevent collisions. See Owner's Manual for safety information. <sup>10</sup>Rear Intelligent Emergency Braking cannot prevent all collisions and may not provide warning or braking in all conditions. Driver should monitor traffic conditions and brake as needed to prevent collisions. See Owner's Manual for safety information. <sup>11</sup>Rear Cross Traffic Alert may not detect all vehicles. See Owner's Manual for safety information. <sup>12</sup>Blind Spot Warning cannot prevent collisions and may not detect every object or warn in all situations. Driver should always turn and look before changing lanes. See Owner's Manual for safety information. <sup>13</sup>Lane Departure Warning and Intelligent Lane Intervention only operate when lane markings are able to be detected. See Owner's Manual for safety information. <sup>14</sup>ProPILOT Assist cannot prevent collisions. Always monitor traffic conditions and keep both hands on the steering wheel. See Owner's Manual for safety information. <sup>15</sup>Intelligent Forward Collision Warning cannot prevent collisions. See Owner's Manual for safety information. <sup>16</sup>Intelligent Around View® Monitor cannot eliminate blind spots and may not detect every object. Driver should always turn and check surroundings before driving. See Owner's Manual for safety information. <sup>17</sup>Virtual composite 360° view. <sup>18</sup>Traffic Sign Recognition (TSR) may not detect and read all traffic signs in all conditions. Driver should monitor all traffic signs and obey all traffic laws. <sup>19</sup>Extra cost option. <sup>20</sup>Genuine Nissan Accessory Roof Rail Crossbars have a maximum weight limit of 100 lbs. <sup>21</sup>Whichever occurs first. <sup>22</sup>Intelligent Trace Control cannot prevent collisions or loss of control. Driver should remain in control of vehicle at all times. See Owner's Manual for safety information. <sup>23</sup>The optional Rear Sonar System is a convenience, but is not a substitute for proper backing procedures. Always turn and check that it is safe to do so before backing up. May not detect every object behind you. <sup>24</sup>Vehicle Dynamic Control cannot prevent collisions due to abrupt steering, carelessness, or dangerous driving techniques. It should remain on when driving, except when freeing the vehicle from mud or snow. See Owner's Manual for safety information. <sup>25</sup>Driving is serious business and requires your full attention. If you have to use the feature while driving, exercise extreme caution at all times so full attention may be given to vehicle operation. <sup>26</sup>Information displayed is dependent on how vehicle is equipped. <sup>27</sup>Availability of specific features is dependent upon the phone's Bluetooth® support. Please refer to your phone Owner's Manual for details. Bluetooth® word mark and logos are owned by Bluetooth SIG, Inc., and any use of such marks by Nissan is under licence. <sup>28</sup>XM® and SiriusXM® Satellite Radio is available in the 10 Canadian provinces and the 48 contiguous United States. Subscription sold separately after trial period. All subscriptions subject to customer agreement at [siriusxm.ca/terms](http://siriusxm.ca/terms). All fees and programming subject to change. ©2019 Sirius XM Canada Inc. The Sirius,® XM,® and SiriusXM® names and all related marks and logos are trademarks of Sirius XM Radio Inc. All other trademarks are the property of their respective owners. <sup>29</sup>RearView Monitor may not detect every object and does not eliminate blind spots or warn of moving objects. See Owner's Manual for safety information. <sup>30</sup>See Owner's Manual for safety information. <sup>31</sup>Tire Pressure Monitoring System is not a substitute for regular tire pressure checks. See Owner's Manual for safety information. <sup>32</sup>Vehicle must be on for the Easy-Fill Tire Alert to operate. <sup>33</sup>Airbags are only a supplemental restraint system. Always wear your seat belt. Rear-facing child restraints should not be placed in the front-passenger's seat. All children 12 and under should ride in the rear seat properly secured in child restraints, booster seats, or seat belts according to their size. Airbags will only inflate in certain accidents. See Owner's Manual for safety information. <sup>34</sup>Intelligent Cruise Control uses limited braking and is not a collision avoidance or warning system. Driver should monitor traffic conditions and brake as needed to prevent collisions. See Owner's Manual for safety information. <sup>35</sup>Intelligent Driver Alertness cannot provide a warning in every situation. See Owner's Manual for safety information. <sup>36</sup>Never program while driving. GPS mapping may not be detailed in all areas or reflect current road status. <sup>37</sup>Brake Assist cannot prevent all collisions and may not provide warning or braking in all conditions. Driver should monitor traffic conditions and brake as needed to prevent collisions. See Owner's Manual for safety information. <sup>38</sup>2020 Fuel Consumption Estimates. Actual mileage may vary with driving conditions – use for comparison only. Android Auto, Google, Google Maps, Google Play, YouTube and other marks are trademarks of Google LLC. Apple CarPlay® is a registered trademark of Apple, Inc. Apple Maps is a trademark of Apple, Inc. Bluetooth® is a registered trademark of Bluetooth SIG, Inc. Bose® is a registered trademark of The Bose Corporation. Facebook® is a registered trademark of Facebook, Inc. HomeLink® is a registered trademark of Gentex Corporation. Instagram® is a registered trademark of Instagram, LLC. iPhone® is a registered trademark of Apple, Inc. All rights reserved. iPhone® or other external device not included. Siri® is a registered trademark of Apple, Inc. The Sirius,® XM,® and SiriusXM® names and all related marks and logos are trademarks of Sirius XM Radio Inc. All other trademarks are the property of their respective owners. Twitter® is a registered trademark of Twitter, Inc. Images may show additional available equipment. All illustrations, photographs and specifications in this brochure are based on the latest product information. See actual vehicle for complete accuracy. Nissan Canada Inc. reserves the right to make changes at any time, without notice, in prices, colours, materials, equipment, specifications and models, and to discontinue models or equipment. For information on additional options and accessories, contact your Nissan Dealership. Registered trademarks are property of their respective owners. At [nissan.ca](http://nissan.ca), you'll find a way to "build your own Nissan," a dealer locator, and more information about key Nissan support services. The Nissan names, logos, product names, feature names, and slogans are trademarks owned by or licenced to Nissan Motor Co. Ltd. and/or its North American subsidiaries. **Always wear your seat belt, and please drive responsibly.** Printed in December 2019. Catalogue number: 99999-QAS20EN. ©2019 Nissan Canada Inc. All rights reserved.

visit [nissan.ca](http://nissan.ca)



Innovation  
that excites

2020  
QASHQAI®







Cross over to progressive new style and a commanding view of downtown. Commute with the confidence of drive assist features that can respond to trouble before it messes with your plans. Rain? Snow? Intelligent All-Wheel Drive welcomes it all.<sup>1,2</sup> Seamlessly access podcasts, group chats, and more with advanced smartphone integration.<sup>3</sup> The new 2020 Nissan Qashqai.<sup>®</sup> This is tech that conquers the city. This is Nissan Intelligent Mobility.<sup>4</sup>



## SMART PREMIUM

The intuitively laid-out Qashqai® interior is designed to keep up with your life, while generous head and leg room keep the crew happy on longer trips. And thoughtful details, like stitching on the seats and doors, give the space a handcrafted feel.

Nissan Qashqai® SL shown in Charcoal Leather.

Leather-appointed  
Seats¹

Sporty D-shaped Heated  
Steering Wheel¹

Quick Comfort®  
Heated Front Seats

Nissan Intelligent Key®  
with Remote Engine  
Start System¹,⁵

Power Sliding  
Glass Moonroof¹



# STREET-SAVVY, ADVENTURE-READY

NISSAN INTELLIGENT MOBILITY™

## CALM, COOL, CONNECTED

NissanConnect® works seamlessly with your compatible smartphone and Qashqai's 178 mm (7") colour touch-screen.<sup>3,6</sup>

U.S. instrumentation shown.



People to see? Places to be? Just ask Siri.® Equipped with Siri,® Apple CarPlay® brings on board your contacts, favourite audio apps, Apple Maps, and more. You can even use your steering wheel controls to adjust volume and toggle through screens. Simply plug in your compatible iPhone® and go.<sup>3,6</sup>



androidauto

Get where you're going with Google Maps™ as your guide and Google Play™ Music providing the soundtrack along the way. Choose a song, change your destination, or respond to a text with your hands on the wheel using the hundreds of available voice commands.<sup>3,6,7</sup>

## DIVIDE-N-HIDE®

Reversible cargo-floor panels adjust easily to provide multiple configurations, while the back seats fold down flat to accommodate larger gear, giving you space for your daily essentials and weekend getaways.<sup>1,8</sup>



U.S. model shown.



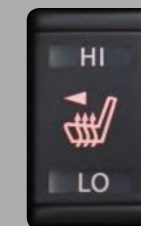
## INTELLIGENT ALL-WHEEL DRIVE

Intelligent All-Wheel Drive is so responsive, it can adapt to changing conditions 30 times faster than the blink of an eye. Snow, rain-covered pavement, or tight turns, the system automatically sends power to the wheels that need it most.<sup>1,2</sup>

## COLD-WEATHER FEATURES

### QUICK COMFORT® HEATED FRONT SEATS

Standard Quick Comfort® heated front seats not only take the edge off a chilly morning, they feel great on your back in any weather.



### HEATED STEERING WHEEL

Gone are the days of leaving your gloves on in the car, thanks to the heated steering wheel!<sup>1</sup>

### REMOTE ENGINE START SYSTEM WITH INTELLIGENT CLIMATE CONTROL

On hot days, the Remote Engine Start System with Intelligent Climate Control can adjust temperature and airflow for a quick cool-down.<sup>1,5</sup>

On cold days, the system can adjust airflow to warm up the cabin, defrost windows and windshield, and even turn on the heated steering wheel and outside mirrors.<sup>1,5</sup>





## A MORE CONFIDENT, EXCITING, AND CONNECTED RIDE

Nissan Intelligent Mobility is changing how you move forever. You'll drive with greater awareness and can even get an assist when you need it. Everything is easier too, as you sync from your compatible smartphone to your Qashqai® and the world around you.<sup>3</sup> This is the future of driving, and it's here for everyone right now.<sup>4</sup>



## AN EASIER COMMUTE AT THE PUSH OF A BUTTON

### NISSAN ProPILOT ASSIST

With ProPILOT Assist, you can actually look forward to your daily drive. Push the button to activate, and this advanced system shares some of the driving tasks with you, helping you stay with the flow of traffic and even helping to keep you centred in your lane.<sup>1,14</sup>



#### PROPILOT ASSIST IN HIGHWAY TRAFFIC

Take the tedium out of stop and go. ProPILOT Assist helps your Qashqai keep a set distance from the car ahead based on the traffic flow. It can even come to a full stop, and can bring you back up to speed when traffic starts moving again.<sup>1,14</sup>

#### PROPILOT ASSIST ON THE OPEN ROAD

No more drifting. ProPILOT Assist helps keep you centred in your lane through the straightaways, and even through gentle curves.<sup>1,14</sup>

## DRIVE ASSIST TECHNOLOGIES HAVE YOUR BACK

### SIX ADVANCED SAFETY FEATURES – STANDARD ON EVERY QASHQAI

Part of Nissan Intelligent Mobility, these six safety technologies keep an eye out for you ahead, behind, and on either side, even helping you brake when you need it. And they all come standard on every Qashqai.<sup>4</sup>



**INTELLIGENT EMERGENCY BRAKING WITH PEDESTRIAN DETECTION<sup>9</sup>**



**REAR INTELLIGENT EMERGENCY BRAKING<sup>10</sup>**



**REAR CROSS TRAFFIC ALERT<sup>11</sup>**



**BLIND SPOT WARNING<sup>12</sup>**



**LANE DEPARTURE WARNING<sup>13</sup>**



**HIGH BEAM ASSIST**



#### INTELLIGENT FORWARD COLLISION WARNING

Qashqai is on the lookout when you can't see what's going on ahead. It watches two cars in front, monitoring your speed and distance, and when it detects sudden deceleration, it gives you a warning to slow down.<sup>15</sup>



#### INTELLIGENT AROUND VIEW® MONITOR

Keep your pride and rims intact. Intelligent Around View Monitor makes parking easy with a virtual composite 360° bird's-eye view of your Qashqai. You can select from split-screen close-ups of the front, rear, and curbside views for a better look. It also gives you an on-screen heads-up when it detects moving objects near your vehicle. We're looking at you, shopping cart.<sup>1,16,17</sup>



Shown on Nissan Maxima.\*  
U.S. instrumentation shown.

#### TRAFFIC SIGN RECOGNITION

Missed that speed limit sign? Qashqai didn't. With available Traffic Sign Recognition, Qashqai detects road signs as you drive along, and will keep you up to date on the speed limit.<sup>1,18</sup>

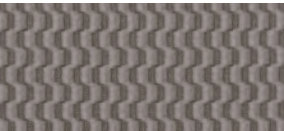


#### INTELLIGENT LANE INTERVENTION

Qashqai helps keep you in your lane. When lane markings are clear, Intelligent Lane Intervention can detect if you're straying out of your lane and can tap the brakes to help gently guide you back.<sup>1,15</sup>



PAINT AND FABRIC



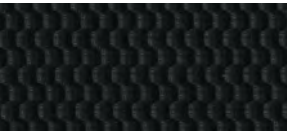
Light Grey Cloth  
S



Light Grey Cloth  
SV



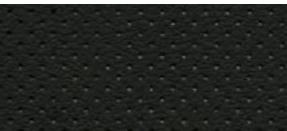
Light Grey Leather  
SL



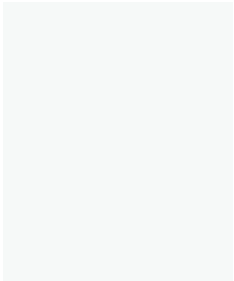
Charcoal Cloth  
S



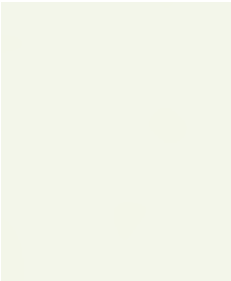
Charcoal Cloth  
SV



Charcoal Leather  
SL



Glacier White QAK



Pearl White<sup>19</sup> QAB

	S	SV	SL	S	SV	SL
LIGHT GREY CLOTH						
LIGHT GREY LEATHER						
CHARCOAL CLOTH	■				■	
CHARCOAL LEATHER						■

■ Standard

Nissan has taken care to ensure that the colour swatches presented here are the closest possible representations of actual vehicle colours. Swatches may vary slightly due to the printing process and whether viewed in daylight, fluorescent or incandescent light. Please see the actual colours at your dealer.



Gun Metallic<sup>19</sup> KAD



Monarch Orange<sup>19</sup> EBB



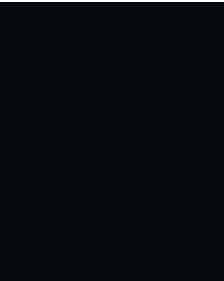
Scarlet Ember<sup>19</sup> NBL



Nitro Lime<sup>19</sup> EBA



Caspian Blue<sup>19</sup> RBV



Magnetic Black<sup>19</sup> G41

S	SV	SL	S	SV	SL	S	SV	SL	S	SV	SL	S	SV	SL	S	SV	SL
■																	
	■			■			■										
		■			■			■									■

GENUINE NISSAN ACCESSORIES

Every Genuine Nissan Accessory is custom-fit, custom-designed and durability-tested. Each one is backed by Nissan's 3 year/60,000 km (whichever occurs first) limited warranty (if installed by dealer at the time of purchase), and can be financed when installed by dealer at time of purchase. Terms, conditions, and exclusions apply. See your Warranty Information Booklet for complete details.

A. 17" Aluminum-alloy Wheels

Cruise with some attitude.

B. Chrome Rear Bumper Protector

Helps protect bumper from nicks and scratches.

C. Roof Rail Crossbars<sup>8,20</sup>

Transfer the weight from your shoulders to your roof.

D. Illuminated Kickplates

Step inside and light 'em up.

Additional Accessories:

- All-Season Floor Mats
- LED Fog Lights
- Interior Accent Lighting
- Front Lip Finisher
- Rear Glass Finisher
- Frameless Auto-dimming Rear View Mirror with Universal Remote
- Frameless Prizm Rear View Mirror with Universal Remote
- And More



See your Nissan dealer for details, or go to [accessories.nissan.ca](https://accessories.nissan.ca)

BUYING AND OWNING

**Finance Options** Through Nissan Canada Finance, we offer many attractive lease and loan options that can be tailored to your individual needs. We have unique programs such as the Nissan Grad Program, Loyalty Program or the Nissan Advantage Program. Please visit our website [Nissan.ca/finance](https://Nissan.ca/finance) to explore all of the options available. We have also made it easy to pre-qualify online. All of our programs come with competitive rates and terms. With our flexible options, driving home a new Nissan has never been easier. Consult your local Nissan Dealership for complete details.

**No-Nonsense Warranty** Every 2020 Nissan is covered by a 3 year/60,000 km<sup>21</sup> Comprehensive New Vehicle Warranty, a 5 year/100,000 km<sup>21</sup> Powertrain Warranty, an 8 year/130,000 km<sup>21</sup> Emission OBD Warranty on selected components, and a 5 year/unlimited km Corrosion Perforation Warranty. As a Nissan owner, you'll also receive a 3 year Roadside Assistance program available to you 24 hours a day. Terms, conditions and exclusions apply. See your Warranty Information Booklet for complete details.

**Added Security Plan (ASP)** For ultimate peace of mind, consider the Nissan Added Security Plan. It's our commitment to be there for you, and to help you leave your worries behind. Different plans, available for both purchased and leased vehicles, let you tailor the coverage to your driving habits.

**Security+Plus™ Prepaid Maintenance Plan** The smart choice when it comes to maintaining your new Nissan. Honoured at all participating Nissan Dealers in Canada and the U.S., your vehicle is cared for by factory-trained technicians using Genuine Nissan Parts. And best of all, there's no worrying about price increases on parts or service in the future. A variety of plans are available. Ask your Dealer for details.





CHOOSE YOUR TRIM LEVEL

S MANUAL TRANSMISSION

- 2.0-litre DOHC 16-valve 4-cylinder engine
- 6-speed manual transmission
- Electronic parking brake
- Front-Wheel Drive (FWD)
- Intelligent Ride Control
- Intelligent Trace Control<sup>22</sup>
- Intelligent Forward Collision Warning<sup>15</sup>
- Intelligent Emergency Braking with Pedestrian Detection<sup>9</sup>
- Lane Departure Warning and Intelligent Lane Intervention<sup>13</sup>
- Rear Intelligent Emergency Braking<sup>10</sup>
- Blind Spot Warning<sup>12</sup>
- Rear Cross Traffic Alert<sup>11</sup>
- Rear Sonar System<sup>23</sup>
- High Beam Assist
- Vehicle Dynamic Control (VDC)<sup>24</sup> with Traction Control System (TCS)
- 16" Steel wheels with wheel covers
- P215/65R16 All-Season tires
- LED Daytime Running Lights
- Automatic-on/off headlights
- Apple CarPlay<sup>®6</sup>
- Android Auto<sup>™6</sup>
- Rear spoiler
- Power heated outside mirrors with LED turn signal indicators
- Advanced Drive-Assist<sup>®</sup> Display<sup>25,26</sup>

- NissanConnect<sup>®</sup> 170 mm (7") touch-screen display<sup>25</sup>
- Siri<sup>®</sup> Eyes Free<sup>6</sup>
- Hands-free Text Messaging Assistant<sup>7</sup>
- Bluetooth<sup>®</sup> Hands Free Phone System and streaming audio<sup>27</sup>
- SiriusXM<sup>®</sup> Radio with 3-month subscription included<sup>28</sup>
- One USB port<sup>3</sup>
- RearView Monitor<sup>29</sup>
- Integrated key with remote keyless entry
- Tilt and telescoping steering column
- Illuminated steering wheel-mounted controls
- Variable intermittent front and intermittent rear windshield wipers
- Rear Door Alert<sup>30</sup>
- 12-volt DC power outlet<sup>3</sup>
- Six cargo tie-down hooks<sup>8</sup>
- Cargo cover<sup>8</sup>
- 6-way manual driver's seat
- Quick Comfort<sup>®</sup> heated front seats
- 60/40 2nd-row split folding seat
- Cloth seat trim
- Tire Pressure Monitoring System (TPMS) with Easy-Fill Tire Alert<sup>31,32</sup>
- Nissan Advanced Airbag System<sup>33</sup>



Additional equipment shown.

S CVT

INCLUDES S MANUAL TRANSMISSION EQUIPMENT PLUS:

- Xtronic CVT<sup>®</sup> (Continuously Variable Transmission) with manual shift mode
- Available Intelligent All-Wheel Drive (AWD)<sup>2</sup>
- 17" Aluminum-alloy wheels
- P215/60R17 All-Season tires

- Intelligent Engine Brake
- Foot-style parking brake (replaces electronic parking brake)
- Cruise control
- Rear seat heating/cooling vents

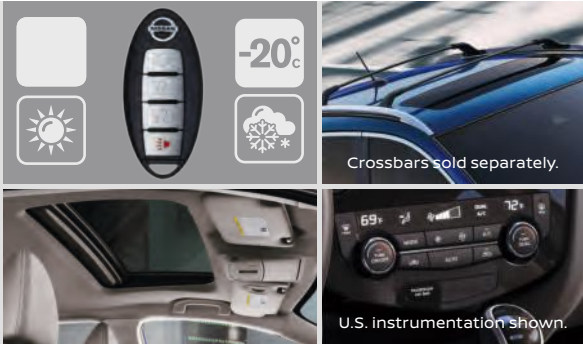


SV

INCLUDES S CVT EQUIPMENT PLUS:

- Power sliding glass moonroof
- Silver-finished roof rails<sup>8</sup>
- Dual Zone Automatic Temperature Control
- Heated leather-wrapped steering wheel
- Leather-wrapped shift knob
- Nissan Intelligent Key<sup>®</sup> with Push Button Ignition

- Remote Engine Start System with Intelligent Climate Control<sup>5</sup>
- AM/FM/CD audio system with six speakers
- Rear centre armrest
- Divide-N-Hide<sup>®</sup> Cargo System<sup>8</sup>
- Dual illuminated visor vanity mirrors



SL

INCLUDES SV EQUIPMENT PLUS:

- Intelligent All-Wheel Drive (AWD)<sup>2</sup>
- 19" Aluminum-alloy wheels
- P225/45R19 All-Season tires
- Electronic parking brake
- ProPILOT Assist<sup>14</sup>
  - Steering Assist
  - Intelligent Cruise Control<sup>34</sup> with Full Speed Range and Hold
- Intelligent Driver Alertness<sup>35</sup>
- Traffic Sign Recognition<sup>18</sup>
- Nissan Door to Door Navigation with Premium Traffic<sup>36</sup>

- Nissan Voice Recognition<sup>36</sup>
- SiriusXM<sup>®</sup> Traffic and Travel Link<sup>®</sup> with 3-month trial access<sup>28</sup>
- NissanConnect<sup>®</sup> Services powered by SiriusXM<sup>®</sup> with trial access to 3-year Select and 6-month Premium Plus packages<sup>5,6</sup>
- Intelligent Around View<sup>®</sup> Monitor<sup>16</sup>
- 8-way power driver's seat, including 2-way lumbar support
- Leather-appointed seats
- Front seatback pockets

KEY AVAILABLE PACKAGE:

- Platinum Package



SL

PLATINUM PACKAGE

- LED headlights
- Bose<sup>®</sup> Premium Audio System with subwoofer
- Auto-dimming inside mirror with HomeLink<sup>®</sup> universal garage-door opener
- Memory System – driver's seat and outside mirrors
- 4-way power passenger's seats
- Fog lights



SPECIFICATIONS

Engine	S	SV	SL
2.0-litre DOHC 16-valve 4-cylinder	■	■	■
— Horsepower – 141 HP @ 6000 rpm			
— Torque – 147 lb.-ft. @ 4400 rpm			
Continuously Variable Valve Timing Control System (CVTCS) on intake and exhaust valves	■	■	■
Nissan Direct Ignition System with platinum-tipped spark plugs	■	■	■
Eco Mode	■	■	■
Drivetrain			
Front-Wheel Drive (FWD)	■	■	
Intelligent All-Wheel Drive (AWD) <sup>1,2</sup>	□	□	■
6-speed manual transmission	■		
Xtronic CVT® (Continuously Variable Transmission) with manual shift mode	□	■	■
Brakes			
4-wheel vented disc brakes	■	■	■
4-wheel Anti-lock Braking System (ABS)	■	■	■
Electronic Brake force Distribution (EBD)	■	■	■
Brake Assist <sup>37</sup>	■	■	■
Foot-style parking brake (CVT only)	□ <sup>1</sup>	■	
Electronic parking brake	■		■
Suspension/Chassis Bracing/Steering			
Independent strut front suspension	■	■	■
Independent multi-link rear suspension	■	■	■
Front and rear stabilizer bars	■	■	■
Electronic power steering with Sport Mode	■	■	■
Driver Assistance Technologies			
Cruise control	□ <sup>1</sup>	■	■
Intelligent Cruise Control <sup>34</sup>			■
ProPILOT Assist <sup>14</sup>			■
— Steering Assist			■
— Intelligent Cruise Control <sup>34</sup> with Full Speed Range and Hold			■
Intelligent Emergency Braking with Pedestrian Detection <sup>9</sup>	■	■	■
Rear Intelligent Emergency Braking <sup>10</sup>	■	■	■
Intelligent Forward Collision Warning <sup>15</sup>	■	■	■
Lane Departure Warning and Intelligent Lane Intervention <sup>13</sup>	■	■	■
Blind Spot Warning <sup>12</sup>	■	■	■
Rear Cross Traffic Alert <sup>11</sup>	■	■	■
RearView Monitor <sup>29</sup>	■	■	■
Intelligent Around View® Monitor <sup>16</sup>			■
Rear Sonar System <sup>23</sup>	■	■	■
High Beam Assist	■	■	■
Intelligent Trace Control <sup>22</sup>	■	■	■
Intelligent Ride Control	■	■	■
Intelligent Engine Brake	□ <sup>1</sup>	■	■
Hill start assist	■	■	■
Vehicle Dynamic Control (VDC) <sup>24</sup> with Traction Control System (TCS)	■	■	■
Traffic Sign Recognition <sup>18</sup>			■
Intelligent Driver Alertness <sup>35</sup>			■
Wheels/Tires			
16" x 6.5" steel wheels with wheel covers	■		
17" x 7.0" aluminum-alloy wheels	□ <sup>1</sup>	■	
19" x 7.0" aluminum-alloy wheels			■

Wheels/Tires (continued)	S	SV	SL
P215/65R16 All-Season tires	■		
P215/60R17 All-Season tires	□ <sup>1</sup>	■	
P225/45R19 All-Season tires			■
Exterior Features			
LED Daytime Running Lights	■	■	■
Halogen headlights with LED signature	■	■	■
LED headlights			P
Automatic-on/off headlights	■	■	■
Fog lights			P
Power heated outside mirrors with LED turn signal indicators	■	■	■
Silver-finished roof rails <sup>8</sup>		■	■
Rear spoiler	■	■	■
Black wheel arch mouldings and rocker panels	■	■	■
Power sliding glass moonroof		■	■
Comfort/Convenience			
Auto-dimming inside mirror with HomeLink® universal garage-door opener			P
Dual Zone Automatic Temperature Control		■	■
Rear seat heating/cooling vents	□ <sup>1</sup>	■	■
Power windows with driver's one-touch auto-up/down feature	■	■	■
Power door locks with auto-locking feature	■	■	■
Integrated Key with remote keyless entry	■		
Nissan Intelligent Key® with Push Button Ignition		■	■
Remote Engine Start System with Intelligent Climate Control <sup>5</sup>		■	■
Tilt and telescoping steering column	■	■	■
Illuminated steering wheel-mounted controls	■	■	■
Variable intermittent windshield wipers	■	■	■
Intermittent rear window wiper	■	■	■
Rear Door Alert <sup>30</sup>	■	■	■
12-volt DC power outlet <sup>3</sup>	■	■	■
Sun visors with vanity mirrors and extensions	■	■	■
Dual illuminated visor vanity mirrors		■	■
Overhead map lights	■	■	■
Overhead sunglasses storage	■	■	■
Front centre console	■	■	■
Rear-seat centre armrest		■	■
Front seatback pockets			■
Four cup holders and four bottle holders		■	■
Six cargo tie-down hooks <sup>8</sup>	■	■	■
Divide-N-Hide® Cargo System <sup>8</sup>		■	■
Cargo cover <sup>8</sup>	■	■	■
Seating/Appointments			
6-way manual driver's seat	■	■	
8-way power driver's seat, including 2-way lumbar support			■
4-way manual front-passenger's seat	■	■	■
4-way power front-passenger's seat			P
60/40 2nd-row split folding seat	■	■	■
Cloth seat trim	■	■	
Leather-appointed seats			■
Memory System – driver's seat and outside mirrors			P
Quick Comfort® heated front seats	■	■	■
Heated leather-wrapped steering wheel		■	■
Leather-wrapped shift knob		■	■

Infotainment	S	SV	SL
Advanced Drive-Assist® Display <sup>25,26</sup>	■	■	■
NissanConnect 170 mm (7") touch-screen display <sup>25</sup>	■	■	■
Nissan Door to Door Navigation with Premium Traffic <sup>36</sup>			■
Nissan Voice Recognition <sup>36</sup>			■
NissanConnect® Services powered by SiriusXM® with trial access to 3-year Select and 6-month Premium Plus packages <sup>5,6</sup>			■
Android Auto™ <sup>6</sup>	■	■	■
Apple CarPlay® <sup>6</sup>	■	■	■
SiriusXM® Traffic and Travel Link® with 3-month trial access <sup>28</sup>			■
Hands-free Text Messaging Assistant <sup>7</sup>	■	■	■
Siri® Eyes Free <sup>6</sup>	■	■	■
Bluetooth® Hands Free Phone System <sup>27</sup>	■	■	■
AM/FM/CD audio system with four speakers	■		
AM/FM/CD audio system with six speakers		■	■
Bose® Premium Audio System with subwoofer			P
MP3/WMA CD playback capability	■	■	■
Auxiliary audio input jack <sup>3</sup>	■	■	■
USB connection port <sup>3</sup>	■	■	■
Streaming audio via Bluetooth® wireless technology <sup>27</sup>	■	■	■
SiriusXM® Radio with 3-month subscription included <sup>28</sup>	■	■	■
Radio Data System (RDS)	■	■	■
Speed-sensitive volume control	■	■	■
Illuminated steering wheel-mounted audio controls	■	■	■
Safety/Security			
Nissan Advanced Airbag System with dual-stage supplemental front airbags with occupant-classification sensors <sup>33</sup>	■	■	■
Driver and front passenger supplemental knee airbags <sup>33</sup>	■	■	■
Driver and front-passenger seat-mounted side-impact supplemental airbags <sup>33</sup>	■	■	■
Rear passenger side-impact supplemental airbags for outboard occupants <sup>33</sup>	■	■	■
Roof-mounted curtain supplemental airbags with rollover sensor for side-impact head protection for front- and rear-seat outboard occupants <sup>33</sup>	■	■	■
3-point ELR driver and passenger seat belt system	■	■	■
LATCH System (Lower Anchors and Tethers for Children)	■	■	■
Tire Pressure Monitoring System (TPMS) with Easy-Fill Tire Alert <sup>31,32</sup>	■	■	■

PACKAGE

□ SL Platinum Package
• LED headlights • 4-way power front passenger's seat • Bose® Premium Audio System with subwoofer • Auto-dimming inside mirror with HomeLink® universal garage-door opener • Memory System – driver's seat and outside mirrors • Fog lights

Nissan's environmental action plan focuses on several key areas. In addition to increasing production of Zero Emission vehicles like the 100% electric LEAF®, we're improving fuel efficiency across our lineup, and reducing the environmental impact of manufacturing through energy-efficient practices in our plants.



DIMENSIONS/CAPACITIES/WEIGHTS/FUEL

Dimensions		
Exterior – mm (inches)		
Wheelbase	2646 (104.2)	
Overall length	4388 (172.8)	
Overall width	1838 (72.3)	
Overall height (without roof rails/with roof rails)	1587 (62.5)/1610 (63.4)	
Track width (front/rear)	1585 (62.4)/1580 (62.2)	
Aerodynamics – Cd		
Drag coefficient	0.33	
Interior (front/rear) – mm (inches)		
Head room without moonroof (front/2nd row)	1006.4/973.2 (39.6/38.3)	
Head room with moonroof (front/2nd row)	984.8/976.8 (38.8/38.5)	
Leg room (front/2nd row)	1087/848.1 (42.8/33.4)	
Hip room (front/2nd row)	1355.2/1190.4 (53.4/46.9)	
Shoulder room (front/2nd row)	1437.9/1413.6 (56.6/55.7)	
Capacities		
Seating capacity	5	
Interior passenger volume without moonroof – L (cu. ft.)	2718 (96)	
Interior passenger volume with moonroof – L (cu. ft.)	2670 (94.3)	
Cargo capacity with 2nd row upright – L (cu. ft.) <sup>8</sup>	648 (22.9) 566 (20) with moonroof	
Cargo capacity with rear seats folded down – L (cu. ft.) <sup>8</sup>	1730 (61.1) 1509 (53.3) with moonroof	
Fuel tank – L (Imp. gal.)	55 (12.1)	
Curb Weights – kg (lbs.)		
Base Total	S	SV
FWD (M/T)	1475 (3251)	–
FWD (CVT)	1513 (3336)	1532 (3378)
AWD (CVT)	1569 (3459)	1580 (3483)
2020 Fuel Consumption Estimates – L/100 km (MPG) <sup>38</sup>		
City/Highway		
FWD (M/T)	10.1 (28)/8.2 (34)	
FWD (CVT)	8.8 (32)/7.4 (38)	
AWD (CVT)	9 (31)/7.7 (37)	
Actual mileage may vary with driving conditions — use for comparison only.		

■ Standard      P Part of SL Platinum Package  
□ Optional

### NISSAN QASHQAI®

Isn't it time you were passionate about the vehicle you drive?  
Welcome to the 2020 Qashqai.

Follow Nissan Canada on:

