

NISSAN INTELLIGENT MOBILITY™

Nissan Intelligent Mobility guides everything we do. We're using new technologies to transform cars from mere driving machines into partners. Together the journey is more confident, connected, and exciting. Whether it's cars that share the task of driving with you, or highways that charge your EV as you go along, it's all in the very near future. And it's a future already taking shape in the Nissan you drive today.



Innovation
that excites

2019
MURANO®



¹Availability of features vary by vehicle model year, model, trim level, packaging, and options. ²Available feature. ³Provincial laws may apply. Review before using. ⁴Front seats and rear outboard seats only. ⁵Driving is serious business and requires your full attention. If you have to use the feature while driving, exercise extreme caution at all times so full attention may be given to vehicle operation. ⁶Information displayed is dependent on how vehicle is equipped. ⁷Driving is serious business and requires your full attention. If you have to use the connected device while driving, exercise extreme caution at all times so full attention may be given to vehicle operation. ⁸Intelligent Around View Monitor cannot eliminate blind spots and may not detect every object. Driver should always turn and check surroundings before driving. See Owner's Manual for safety information. ⁹Virtual composite 360° view. ¹⁰Feature availability is dependent on vehicle model, trim level, packaging and options. Compatible connected device may be required and feature availability may be dependent on device's capability. Refer to connected device's Owner's Manual for details. Late availability for some features. Driving is serious business and requires your full attention. Only use features and connected devices when safe and legal to do so. Some features, including automatic crash notification and SOS, are dependent upon the telematics device being in operative condition, its ability to connect to a wireless network, compatible wireless network availability, navigation map data and GPS satellite signal receptions, the absence of which can limit or prevent the ability to reach Customer Care or receive support. GPS mapping may not be detailed in all areas or reflect current road status. Never program GPS while driving. Only use Remote Engine Start and Remote Horn features in accordance with any laws, rules or ordinances in effect in your vehicle's location. Some services and features are provided by independent companies not within Nissan's control. **Should service provider terminate or restrict service or features, service or features may be suspended or terminated without notice or with no liability to Nissan or its partners or agents.** Services and features may require compatible cellular network provided by independent companies not within Nissan or its partners' or agents' control. Cellular network signal strength may vary and may not be available in all areas or at all times. Services and features may not function if cellular network is unavailable, restricted, or terminated. Nissan and its partners or agents are not responsible for associated costs or other third party changes that may be required for continued operation due to cellular network unavailability, restriction, or termination (including equipment replacements/upgrades, if available, or roaming charges on alternative networks). Technology is evolving, and changes by independent companies are not within Nissan's or its partners' or agents' control. Enrollment, owner consent, personal identification number (PIN), and subscription agreement may be required to receive full suite of features and services. Trial periods (if applicable) begin on the date of vehicle purchase or lease of a new Nissan. Trial periods may be subject to change at any time and may be subject to early termination without notice. Required subscriptions may be sold separately for each available feature or service after trial period ends, and may continue until you call service provider to cancel. Installation costs, one-time activation fee, other fees and taxes may apply. Fees and programming subject to change. Feature may be subject to age restrictions in some areas. Subscriptions governed by service provider's subscription agreement, terms and conditions and privacy statements available at service provider's website. Text rates or data usage may apply. The Nissan names, logos and slogans are trademarks owned by or licenced to Nissan Motor Co. Ltd. or its North American subsidiaries. Other trademarks and trade names are those of their respective owners. **For important safety information, system limitations, and additional operating and feature information, see Dealer or Owner's Manual.** ¹¹Intelligent Emergency Braking with Pedestrian Detection cannot prevent all collisions and may not provide warning or braking in all conditions. Driver should monitor traffic conditions and brake as needed to prevent collisions. See Owner's Manual for safety information. ¹²Lane Departure Warning and Intelligent Lane Intervention operate only when lane markings are able to be detected. See Owner's Manual for safety information. ¹³Blind Spot Warning cannot prevent collisions and may not detect every object or warn in all situations. Driver should always turn and look before changing lanes. See Owner's Manual for safety information. ¹⁴Rear Cross Traffic Alert may not detect all vehicles. See Owner's Manual for safety information. ¹⁵Intelligent Emergency Braking and Rear Intelligent Emergency Braking cannot prevent all collisions and may not provide warning or braking in all conditions. Driver should monitor traffic conditions and brake as needed to prevent collisions. See Owner's Manual for safety information. ¹⁶Intelligent Cruise Control uses limited braking and is not a collision avoidance or warning system. Driver should monitor traffic conditions and brake as needed to prevent collisions. See Owner's Manual for safety information. ¹⁷Intelligent Forward Collision Warning cannot prevent collisions. See Owner's Manual for safety information. ¹⁸Intelligent All-Wheel Drive cannot prevent collisions or provide enhanced traction in all conditions. Always monitor traffic and weather conditions. ¹⁹Front-Wheel Drive (FWD) model only. Actual mileage may vary – use for comparison only. ²⁰Cargo and load capacity limited by weight and distribution. Always secure cargo. Heavy loading of the vehicle with cargo, especially on the roof, will affect the handling and stability of the vehicle. ²¹Extra cost option. ²²See your Nissan Dealership and read the actual limited warranty. ²³Towing capability varies by configuration. See Nissan Towing Guide and Owner's Manual for additional information. ²⁴Whichever occurs first. ²⁵Vehicle Dynamic Control cannot prevent collisions due to abrupt steering, carelessness, or dangerous driving techniques. It should remain on when driving, except when freeing the vehicle from mud or snow. See Owner's Manual for safety information. ²⁶Availability of specific features is dependent upon the phone's Bluetooth® support. Please refer to your phone Owner's Manual for details. Bluetooth® word mark and logos are owned by Bluetooth SIG, Inc., and any use of such marks by Nissan is under licence. ²⁷XM® and SiriusXM® Satellite Radio is available in the 10 Canadian provinces and the 48 contiguous United States. Subscription sold separately after trial period. All subscriptions subject to customer agreement at siriusxm.ca/terms. All fees and programming subject to change. ©2019 Sirius XM Canada Inc. The Sirius®, XM®, and SiriusXM® names and all related marks and logos are trademarks of Sirius XM Radio Inc. All other trademarks are the property of their respective owners. ²⁸RearView Monitor may not detect every object and does not eliminate blind spots or warn of moving objects. See Owner's Manual for safety information. ²⁹Tire Pressure Monitoring System is not a substitute for regular tire pressure checks. See Owner's Manual for safety information. ³⁰Vehicle must be on for the Easy-Fill Tire Alert to operate. ³¹Airbags are only a supplemental restraint system. Always wear your seat belt. Rear-facing child restraints should not be placed in the front-passenger's seat. All children 12 and under should ride in the rear seat properly secured in child restraints, booster seats, or seat belts according to their size. Airbags will only inflate in certain accidents. See Owner's Manual for safety information. ³²See Owner's Manual for safety information. ³³Intelligent Driver Alertness cannot provide a warning in every situation. See Owner's Manual for safety information. ³⁴Never program while driving. GPS mapping may not be detailed in all areas or reflect current road status. ³⁵Moving Object Detection cannot eliminate blind spots and may not detect every object. Driver should always turn and check surroundings before driving. See Owner's Manual for safety information. ³⁶Brake Assist cannot prevent all collisions and may not provide warning or braking in all conditions. Driver should monitor traffic conditions and brake as needed to prevent collisions. See Owner's Manual for safety information. ³⁷Use Hands Free Text Messaging when parked in a safe location. If you must use while driving, monitor traffic conditions and keep both hands on the steering wheel to prevent collisions. Compatible device required. Message and data rates may apply. Android Auto™ is a trademark of Google LLC. Apple CarPlay® is a registered trademark of Apple, Inc. Bluetooth® is a registered trademark of Bluetooth SIG, Inc. Bose® is a registered trademark of The Bose Corporation. Facebook® is a registered trademark of Facebook, Inc. HomeLink® is a registered trademark of Gentex Corporation. Instagram® is a registered trademark of Instagram, LLC. Siri® and Siri® Eyes Free are registered trademarks of Apple, Inc. The Sirius®, XM®, and SiriusXM® names and all related marks and logos are trademarks of Sirius XM Radio Inc. All other trademarks are the property of their respective owners. Twitter® is a registered trademark of Twitter, Inc. YouTube® is a registered trademark of Google LLC. All illustrations, photographs and specifications in this brochure are based on the latest product information. See actual vehicle for complete accuracy. Nissan Canada Inc. reserves the right to make changes at any time, without notice, in prices, colours, materials, equipment, specifications and models, and to discontinue models or equipment. For information on additional options and accessories, contact your Nissan Dealership. Registered trademarks are property of their respective owners. At nissan.ca, you'll find a way to "build your own Nissan," a dealer locator, and more information about key Nissan support services. The Nissan names, logos, product names, feature names, and slogans are trademarks owned by or licenced to Nissan Motor Co. Ltd. and/or its North American subsidiaries. **Always wear your seat belt, and please drive responsibly.** Printed in February 2019. Catalogue number: 99999-MUR19EN. ©2019 Nissan Canada Inc. All rights reserved.

visit nissan.ca

Take in a daring new look for the classic premium crossover. An upgraded interior lets you reconnect with your real social network, while seamless connectivity keeps your wider world within reach. And with available Nissan Intelligent Mobility technologies that see and sense more,¹ you'll enjoy your night out with confidence. The 2019 Nissan Murano®. Tech that moves you.





ENTER YOUR PREFERRED SETTING

Stay cozy thanks to the Remote Engine Start System with Intelligent Climate Control that helps cool off on hot days or warm up and defrost on cold days – before you even step inside. You'll appreciate a heated steering wheel and Zero Gravity climate-controlled front seats that help reduce fatigue. While rear passengers can recline and activate their own available Quick Comfort® heating. It's a premium experience all around, topped off by adjustable mood lighting, touches of chrome and accents in Dark Wood.^{2,3,4}

Nissan Murano® Platinum AWD shown in Cashmere Semi-aniline Leather. U.S. instrumentation shown.

YOU'RE NOT JUST DRIVING, YOU'RE HOSTING

Murano® offers a unique social space designed to let everyone connect in an airy, premium leather-appointed interior.² The wide centre console allows everyone to mingle without leaning or straining. At the wheel, you have enhanced visibility, thanks to a higher seating position and slimmer side pillars that give way to larger windows. Meanwhile, above you, the expanded panoramic moonroof stretches from front to back, breathing in light.² An atmosphere this open makes it easy for everyone to enjoy the journey – and might make your destination seem beside the point.



Advanced Drive-Assist® Display^{5,6}

Passenger-friendly Screen

Wide Centre Console

Rear-seat Perks
USB Input⁷
Heated Rear Seats²



IF YOU WANT PARKING ANY EASIER, YOU'LL HAVE TO VALET

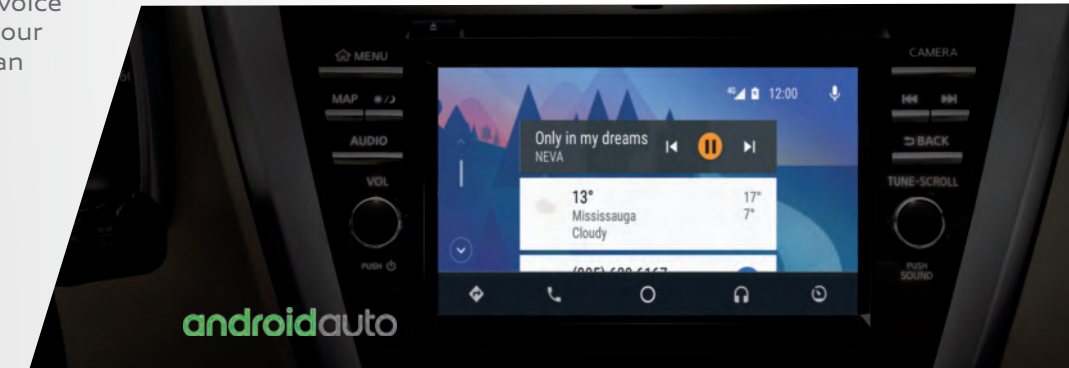
The Intelligent Around View® Monitor uses four cameras to give you a virtual composite 360° bird's-eye view of your vehicle, with selectable split-screen close-ups of the front, rear, and curbside views, so you can get a better look.^{2,8,9}

SEAMLESS CONNECTIVITY

Access the things you want to do on your phone, directly on Murano's 203 mm (8") touch-screen display. Just plug in a compatible smartphone and you'll stay connected.⁷

Apple CarPlay® lets you access apps directly through Murano's screen, while adjusting volume and toggling functions is as easy as using the steering wheel-mounted controls. Siri® comes along, recognizing voice commands and providing personalized music selections, listings, directions, and more.¹⁰

Android Auto™ is a simpler way to use your compatible phone in the car, and was designed with safety in mind. With larger touch targets, a simplified interface, and easy-to-use voice actions, it's designed to integrate with your Murano®, minimizing distraction so you can stay focused on the road.¹⁰



INNOVATION THAT'S RIGHT IN FRONT OF YOU

From turn-by-turn directions to caller ID and safety features, the Advanced Drive-Assist® Display puts it all right before your eyes on its 178 mm (7") colour display to help minimize time looking away, while steering wheel controls let you toggle through the different screens.^{5,6}



REAR USB CONNECTION PORTS

Rear guests enjoy USB connection ports for compatible devices, allowing them to stay charged and connected, without having to hand over their phone.⁷

BOSE® PREMIUM AUDIO SYSTEM

The lights flash on, the first notes of the song begin to fill the air, and the crowd goes wild. This is the best concert ever, and you haven't even left the driveway. With 11 speakers, including dual subwoofers, strategically placed throughout the cabin, the Bose® Premium Audio System provides the richness and detail of a live performance. Each speaker has been custom-tuned by Bose® engineers to take advantage of the unique interior acoustics of Murano, so every instrument seems to hit you from a different angle. It's front-row sound so good, it might even be better than being there.²

U.S. instrumentation shown.

U.S. instrumentation shown.

A BOLDER RIDE THROUGH LIFE

Whether you're changing lanes on the highway or deftly manoeuvring your way out of a parking spot, Murano's Nissan Intelligent Mobility features help you see more, sense more, and can even give you an assist when you need it most.¹ All so you can feel exceptionally confident on every drive.



CONFIDENCE ON EVERY DRIVE

Imagine being surrounded by confidence. Murano is looking out for you. Nissan Intelligent Mobility includes available features that monitor in front of you, behind you, and on either side, and can step in to help keep you out of trouble.¹



INTELLIGENT EMERGENCY
BRAKING WITH
PEDESTRIAN DETECTION^{2,11}



HIGH BEAM
ASSIST²



LANE DEPARTURE
WARNING^{2,12}



BLIND SPOT
WARNING^{2,13}



REAR CROSS
TRAFFIC ALERT^{2,14}



REAR INTELLIGENT
EMERGENCY
BRAKING¹⁵

GET A HAND WHEN YOU WANT IT



INTELLIGENT EMERGENCY BRAKING

Can help save you from a potential frontal collision. This standard feature monitors your speed and distance between you and the car ahead and can let you know if you need to slow down. It can even automatically engage the brakes to help avoid a collision or lessen the severity of an impact.¹⁵



INTELLIGENT CRUISE CONTROL

Watches the flow of traffic to take the tedium out of your daily commute. The system helps maintain an adjustable speed and set distance between you and the car ahead.^{2,16}

SEE AND SENSE MORE AROUND YOU



INTELLIGENT FORWARD COLLISION WARNING

On the lookout when you can't see what's going on ahead. This standard feature watches two cars ahead, monitoring your speed and distance, and when it detects sudden deceleration, it gives you a heads-up to slow down.¹⁷



REAR CROSS TRAFFIC ALERT

Helps you back out of a space with more confidence. It watches around the rear of your Murano, and can warn you about cars it detects creeping up on you from either side.^{2,14}



BLIND SPOT WARNING

Helps you change lanes with confidence. It keeps an eye on the blind spot area and gives you a heads-up if it detects a vehicle hiding there.^{2,13}



INTELLIGENT AROUND VIEW® MONITOR

Gives you an on-screen heads-up when it detects moving objects near your vehicle. We're looking at you, shopping cart.^{2,8}

BECAUSE YOU LIKE YOUR POWER POLISHED

Power, courtesy of a 3.5-L V6 engine. Murano's 260-horsepower 3.5-litre V6 engine keeps you ahead of the pack when you need to be. And efficient fuel economy on the highway keeps it practical. Of course, it doesn't hurt to have aerodynamics that give you a drag coefficient of 0.31 – comparable to sports cars.

Efficiency, brought to you by the Xtronic CVT.® Unlike conventional automatic transmissions, the virtually "gearless" Xtronic CVT (Continuously Variable Transmission) makes gear-hunting a thing of the past. Fully variable gear ratios mean it can hold the engine at the ideal rpm, giving you a wave of power when you need it, and achieving quiet, efficient cruising when you don't.

Intelligent All-Wheel Drive^{2,18} / 260 HP, 3.5-litre V6 / Hill start assist

260 HP

240 LB.-FT. TORQUE

8.3 L/100 KM HWY¹⁹



Nissan Murano® Platinum AWD shown in Pearl White.

INTELLIGENT ALL-WHEEL DRIVE

Take on more. The Intelligent All-Wheel Drive (AWD) is so responsive, it can adapt to changing conditions 30 times faster than the blink of an eye. Snow, rain-covered pavement or tight turns, the system automatically sends power to the wheels that need it most. Even in ideal conditions, Murano's AWD pays big dividends – our passionate engineers also tuned the system for responsive, agile performance.^{2,18}



U.S. model shown.

GENEROUS SPACE WITHIN EASY REACH

For simpler loading and unloading, just kick under the rear bumper to automatically open the Motion Activated Liftgate, without reaching for a key or juggling whatever you're carrying.² Inside, you can collapse the 60/40 split rear seats to increase your cargo volume to 1979 litres (69.9 cu. ft.).²⁰

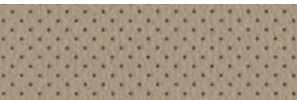
PAINT AND FABRIC



Graphite Cloth
S|SV



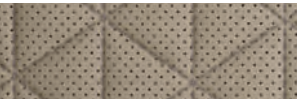
Graphite Leather
SL



Cashmere Leather
SL



Graphite Semi-Aniline Leather
Platinum



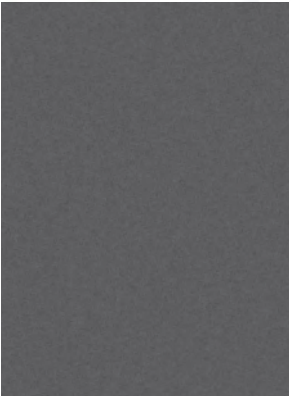
Cashmere Semi-Aniline Leather
Platinum

Nissan has taken care to ensure that the colour swatches presented here are the closest possible representations of actual vehicle colours. Swatches may vary slightly due to the printing process and whether viewed in daylight, fluorescent or incandescent light. Please see the actual colours at your dealer.

■ Standard



Pearl White²¹ QAB



Gun Metallic²¹ KAD



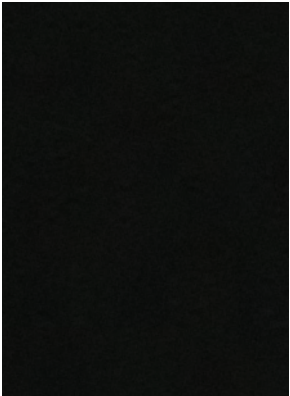
Sunset Drift²¹ EBL



Cayenne Red²¹ NAH



Deep Blue Pearl²¹ RAY



Magnetic Black²¹ G41

GENUINE NISSAN ACCESSORIES

Every Genuine Nissan Accessory is: custom-fit, custom-designed and durability-tested; available for finance and backed by Nissan's 3 year/60,000 km Accessories limited warranty when installed by dealer at time of your vehicle purchase.²²

A. **Stainless Steel Sport Pedals**
Step up your style.

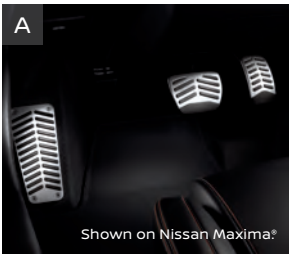
B. **All-season Floor Mats**
Take on rain, snow, or mud.

C. **Cargo Area Protector**²⁰
Preserve and protect your cargo – and your Murano.

D. **Rear Underbody Trim**
Go with the flow.
Add a stylish touch.

Additional Accessories:

- Chrome Rear Bumper Protector
- Hatch Tent
- Tow Hitch Receiver, Class I²³
- Carpeted Cargo Mat²⁰
- Portable Cargo Organizer²⁰
- Remote Engine Start System³
- Illuminated Kick Plates
- And More



See your Nissan dealer for details, or go to accessories.nissan.ca

BUYING AND OWNING

Finance Options Through Nissan Canada Finance, we offer many attractive lease and loan options that can be tailored to your individual needs. We have unique programs such as the Nissan Grad Program, Loyalty Program or the Nissan Advantage Program. Please visit our website **Nissan.ca/finance** to explore all of the options available. We have also made it easy to pre-qualify online. All of our programs come with competitive rates and terms. With our flexible options, driving home a new Nissan has never been easier. Consult your local Nissan Dealership for complete details.

No-Nonsense Warranty Every 2019 Nissan is covered by a 3 year/60,000 km²⁴ Comprehensive New Vehicle Warranty, a 5 year/100,000 km²⁴ Powertrain Warranty, an 8 year/130,000 km²⁴ Emission Control Warranty on selected components, and a 5 year/unlimited km Corrosion Perforation Warranty. As a Nissan owner, you'll also receive a 3 year Roadside Assistance program available to you 24 hours a day. Terms, conditions and exclusions apply. See your Warranty Information Booklet for complete details.

Added Security Plan (ASP) For ultimate peace of mind, consider the Nissan Added Security Plan. It's our commitment to be there for you, and to help you leave your worries behind. Different plans, available for both purchased and leased vehicles, let you tailor the coverage to your driving habits.

Security+Plus™ Prepaid Maintenance Plan The smart choice when it comes to maintaining your new Nissan. Honoured at all participating Nissan Dealers in Canada and the U.S., your vehicle is cared for by factory-trained technicians using Genuine Nissan Parts. And best of all, there's no worrying about price increases on parts or service in the future. A variety of plans are available. Ask your Dealer for details.



Nissan's environmental action plan focuses on several key areas. In addition to increasing production of Zero Emission vehicles like the 100% electric LEAF,[®] we're improving fuel efficiency across our lineup, and reducing the environmental impact of manufacturing through energy-efficient practices in our plants.



CHOOSE YOUR TRIM LEVEL

S

- 260 HP 3.5-litre V6 engine, Xtronic CVT® (Continuously Variable Transmission)
- Front-Wheel Drive (FWD)
- Vehicle Dynamic Control (VDC)²⁵ with Traction Control System (TCS)
- 18" Machine-finished aluminum-alloy wheels
- Automatic on/off headlights
- LED headlights with LED Signature Daytime Running Lights
- LED taillights
- Dual Zone Automatic Temperature Control
- 6-way manual driver's seat
- 4-way manual front-passenger's seat
- Heated front seats
- Nissan Intelligent Key® with Push Button Ignition
- 60/40 Split fold-down rear seatbacks
- Advanced Drive-Assist® Display with 178 mm (7") colour display^{5,6}
- Bluetooth® Hands Free Phone System with Text Messaging Assistant^{10,26}
- NissanConnect® 203 mm (8") touch-screen display^{10,26,27}
- Apple CarPlay®¹⁰
- Android Auto™¹⁰
- RearView Monitor²⁸
- AM/FM/CD audio system with MP3/WMA CD playback capability
- Two USB ports and two USB-C ports⁷
- SiriusXM® Radio with 3-month complimentary trial access^{10,27}
- Streaming audio via Bluetooth® wireless technology^{10,26}
- Tire Pressure Monitoring System (TPMS) with Easy-Fill Tire Alert^{29,30}
- Nissan Advanced Airbag System³¹
- Black roof rails²⁰
- Intelligent Emergency Braking¹⁵
- Intelligent Forward Collision Warning¹⁷
- Rear Door Alert³²
- Intelligent Driver Alertness³³
- Hill start assist



SV

INCLUDES S EQUIPMENT PLUS:

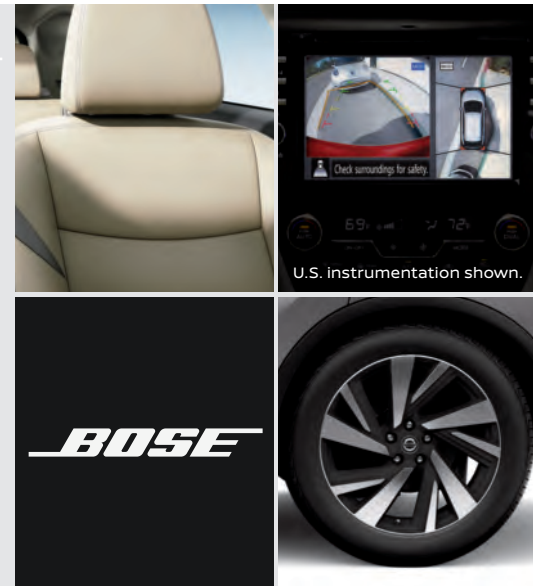
- Intelligent All-Wheel Drive (AWD)¹⁸
- Power Panoramic Moonroof
- Motion Activated Liftgate
- Remote Engine Start System³ with Intelligent Climate Control
- 8-way power driver's seat, including 2-way power lumbar support
- Leather-wrapped steering wheel and shift knob
- Heated steering wheel
- Voice Recognition for audio and navigation³⁴
- SiriusXM® Traffic and Travel Link® with 3-month complimentary trial access^{10,27}
- Nissan Door to Door Navigation with Premium Traffic³⁴
- Blind Spot Warning¹³
- Rear Cross Traffic Alert¹⁴
- NissanConnect® with navigation^{10,26,27}



SL

INCLUDES SV EQUIPMENT PLUS:

- 20" Machine-faced aluminum-alloy wheels
- Silver roof rails²⁰
- LED fog lights
- Intelligent Around View® Monitor with Moving Object Detection^{8,35}
- HomeLink® universal garage-door opener
- Auto-dimming rearview mirror
- Driver's seat and outside mirrors position memory
- Leather-appointed seats
- 4-way power front-passenger's seat
- Front and rear parking sensors
- Adjustable ambient LED interior lighting
- Bose® Premium Audio System with 11 speakers, including dual subwoofers
- Rear heated seats
- Intelligent Cruise Control¹⁶



PLATINUM

INCLUDES SL EQUIPMENT PLUS:

- 20" Dark hyper silver aluminum-alloy wheels
- Intelligent Emergency Braking with Pedestrian Detection¹¹
- Lane Departure Warning¹²
- Intelligent Lane Intervention¹²
- Traffic Sign Recognition
- High Beam Assist
- Rear Intelligent Emergency Braking¹⁵
- Semi-aniline leather-appointed seats with diamond-quilted inserts
- Contrast micro-piping for seat, door, and console inserts
- Climate-controlled front seats (heated and cooled)
- Power-tilt and power-telescoping steering column with memory position
- NissanConnect Services powered by SiriusXM® with complimentary trial access to 3-year Select and 6-month Premium Plus packages^{10,26,27}



SPECIFICATIONS

| Engine | S | SV | SL | PLT |
|--|---|----|----|-----|
| 3.5-litre DOHC 24-valve V6 engine | ■ | ■ | ■ | ■ |
| ...Horsepower – 260 HP @ 6,000 rpm | | | | |
| ...Torque – 240 lb.-ft. @ 4,400 rpm | | | | |
| Continuously Variable Valve Timing Control System (CVTCS) on intake valves | ■ | ■ | ■ | ■ |
| Variable induction system | ■ | ■ | ■ | ■ |
| Nissan Direct Ignition System | ■ | ■ | ■ | ■ |
| Double-tipped iridium spark plugs | ■ | ■ | ■ | ■ |
| Electronic drive-by-wire throttle | ■ | ■ | ■ | ■ |
| Engine block heater | ■ | ■ | ■ | ■ |
| Drivetrain | | | | |
| Front-Wheel Drive (FWD) | ■ | | | |
| Intelligent All-Wheel Drive (AWD) ¹⁸ | | ■ | ■ | ■ |
| Hill start assist | ■ | ■ | ■ | ■ |
| Xtronic CVT® (Continuously Variable Transmission) | ■ | ■ | ■ | ■ |
| Brakes | | | | |
| 4-wheel vented disc brakes | ■ | ■ | ■ | ■ |
| 4-wheel Anti-lock Braking System (ABS) | ■ | ■ | ■ | ■ |
| Electronic Brake force Distribution (EBD) | ■ | ■ | ■ | ■ |
| Brake Assist ³⁶ | ■ | ■ | ■ | ■ |
| Suspension/Steering | | | | |
| Independent strut front suspension | ■ | ■ | ■ | ■ |
| Multi-link rear independent suspension | ■ | ■ | ■ | ■ |
| Front and rear stabilizer bars | ■ | ■ | ■ | ■ |
| Vehicle-speed-sensitive power steering | ■ | ■ | ■ | ■ |
| Wheels/Tires | | | | |
| 18" x 7.5" Machine-finished aluminum-alloy wheels | ■ | ■ | | |
| 20" x 7.5" Machine-finished aluminum-alloy wheels | | | ■ | |
| 20" x 7.5" Dark hyper silver aluminum-alloy wheels | | | | ■ |
| P235/65R18 all-season tires | ■ | ■ | | |
| P235/55R20 all-season tires | | | ■ | ■ |
| Exterior Features | | | | |
| LED headlights with LED signature Daytime Running Lights | ■ | ■ | ■ | ■ |
| Automatic on/off headlights | ■ | ■ | ■ | ■ |
| LED fog lights | | | ■ | ■ |
| LED taillights | ■ | ■ | ■ | ■ |
| Black roof rails ²⁰ | ■ | ■ | | |
| Silver roof rails ²⁰ | | | ■ | ■ |
| Power Panoramic Moonroof with one-touch open/close | | ■ | ■ | ■ |
| Chrome door handles | ■ | ■ | ■ | ■ |
| Splash guards | ■ | ■ | ■ | ■ |
| Power heated outside mirrors with LED turn signal indicators | ■ | ■ | | |
| Power heated outside mirrors with LED turn signal indicators and reverse tilt-down feature | | | ■ | ■ |
| Motion Activated Liftgate | | ■ | ■ | ■ |
| UV-reducing solar glass | ■ | ■ | ■ | ■ |
| Rear privacy glass | ■ | ■ | ■ | ■ |
| Comfort/Convenience | | | | |
| Advanced Drive-Assist® Display with 178 mm (7") colour display ^{5,6} | ■ | ■ | ■ | ■ |
| NissanConnect® 203 mm (8") touch-screen display ^{10,26,27} | ■ | ■ | ■ | ■ |
| Nissan Door to Door Navigation with Premium Traffic ³⁴ | | ■ | ■ | ■ |

| Comfort/Convenience (continued) | S | SV | SL | PLT |
|--|---|----|----|-----|
| Apple CarPlay® ¹⁰ | ■ | ■ | ■ | ■ |
| Android Auto™ ¹⁰ | ■ | ■ | ■ | ■ |
| NissanConnect Services powered by SiriusXM® with complimentary trial access to 3-year select and 6-month Premium Plus packages ^{10,26,27} | | | | ■ |
| Voice Recognition for audio and navigation ³⁴ | | | ■ | ■ |
| SiriusXM® Traffic and Travel Link® with 3-month complimentary trial access ^{10,27} | | ■ | ■ | ■ |
| Hands-free Text Messaging Assistant ³⁷ | ■ | ■ | ■ | ■ |
| Bluetooth® Hands Free Phone System ^{10,26} | ■ | ■ | ■ | ■ |
| RearView Monitor ²⁸ | ■ | ■ | ■ | ■ |
| Intelligent Around View® Monitor ⁹ | | | ■ | ■ |
| Front and rear parking sensors | | | ■ | ■ |
| Rear Door Alert ³² | ■ | ■ | ■ | |
| High Beam Assist | | | | ■ |
| Traffic Sign Recognition | | | | ■ |
| Fine Vision electroluminescent gauges | ■ | ■ | ■ | ■ |
| Dual Zone Automatic Temperature Control with in-cabin microfilter | ■ | ■ | ■ | ■ |
| Rear passenger air conditioning vents | ■ | ■ | ■ | ■ |
| HomeLink® universal garage-door opener | | | ■ | ■ |
| Driver's seat and outside mirrors position memory | | | ■ | ■ |
| Steering-wheel position memory | | | | ■ |
| Cruise control with steering wheel-mounted switches | ■ | ■ | ■ | ■ |
| Intelligent Cruise Control ¹⁶ | | | ■ | ■ |
| Intelligent Driver Alertness ³³ | ■ | ■ | ■ | ■ |
| Nissan Intelligent Key® with Push Button Ignition | ■ | ■ | ■ | ■ |
| Remote Engine Start System with Intelligent Climate Control ³ | | ■ | ■ | ■ |
| Power windows with front one-touch auto-up/down | ■ | ■ | ■ | ■ |
| Power door locks with auto-locking feature | ■ | ■ | ■ | ■ |
| Remote front windows down | ■ | ■ | ■ | |
| Tilt and telescoping steering column | ■ | ■ | ■ | |
| Power-tilt and power-telescoping steering column | | | | ■ |
| Variable intermittent windshield wipers | ■ | ■ | ■ | ■ |
| Intermittent rear window wiper | ■ | ■ | ■ | ■ |
| Auto-dimming rearview mirror | | | ■ | ■ |
| Dual illuminated visor vanity mirrors with sun visor extenders | ■ | ■ | ■ | ■ |
| Three 12-volt DC power outlets | ■ | ■ | ■ | ■ |
| Adjustable ambient LED interior lighting | | | ■ | ■ |
| Dual-level centre console | ■ | ■ | ■ | ■ |
| Cargo area tie-down hooks | ■ | ■ | ■ | ■ |
| Seating/Appointments | | | | |
| 6-way manual driver's seat | ■ | | | |
| 8-way power driver's seat | | ■ | ■ | ■ |
| Driver's seat power lumbar support | | ■ | ■ | ■ |
| 4-way manual front-passenger's seat | ■ | ■ | | |
| 4-way power front-passenger's seat | | | ■ | ■ |
| Heated front seats | | | ■ | |
| Climate-controlled front seats (heated and cooled) | | | | ■ |
| Heated rear seats (outboard only) | | | ■ | ■ |
| 60/40 Split fold-down rear seatbacks with cargo area-accessible levers | ■ | ■ | ■ | ■ |
| Reclining rear seatbacks with centre armrest | ■ | ■ | ■ | ■ |
| Front seatback pockets | ■ | ■ | ■ | ■ |
| Cloth seat trim | ■ | ■ | | |

| Seating/Appointments (continued) | S | SV | SL | PLT |
|--|---|----|----|-----|
| Leather-appointed seats | | | ■ | |
| Semi-aniline leather seats | | | | ■ |
| Contrast micro-piping for seat, door, and console inserts | | | | ■ |
| Heated leather-wrapped steering wheel | | ■ | ■ | ■ |
| Leather-wrapped shift knob | | ■ | ■ | ■ |
| Audio/Entertainment | | | | |
| AM/FM/CD display audio system with six speakers | ■ | ■ | ■ | ■ |
| Bose® Premium Audio System with 11 speakers, including dual subwoofers | | | ■ | ■ |
| MP3/WMA CD playback capability | ■ | ■ | ■ | ■ |
| Auxiliary audio input jack ⁷ | ■ | ■ | ■ | ■ |
| Two USB ports and two USB-C ports ⁷ | ■ | ■ | ■ | ■ |
| SiriusXM® Radio with 3-month complimentary trial access ^{10,27} | ■ | ■ | ■ | ■ |
| Streaming audio via Bluetooth® wireless technology ^{10,26} | ■ | ■ | ■ | ■ |
| Radio Data System (RDS) | ■ | ■ | ■ | ■ |
| Speed-sensitive volume | ■ | ■ | ■ | ■ |
| Illuminated steering wheel-mounted audio controls | ■ | ■ | ■ | ■ |
| Safety/Security | | | | |
| Nissan Advanced Airbag System with supplemental front airbags with seat belt and occupant-classification sensors ³¹ | ■ | ■ | ■ | ■ |
| Driver and front-passenger seat-mounted side-impact supplemental airbags ³¹ | ■ | ■ | ■ | ■ |
| Roof-mounted curtain supplemental airbags with rollover sensor for side-impact and rollover head protection for front and rear-seat outboard occupants ³¹ | ■ | ■ | ■ | ■ |
| Driver and front-passenger supplemental knee airbag ³¹ | ■ | ■ | ■ | ■ |
| Vehicle Dynamic Control (VDC) ²⁵ with Traction Control System (TCS) | ■ | ■ | ■ | ■ |
| Blind Spot Warning ¹³ | | ■ | ■ | ■ |
| Rear Cross Traffic Alert ¹⁴ | | | | ■ |
| Rear Intelligent Emergency Braking ¹⁵ | | | | ■ |
| Intelligent Forward Collision Warning ¹⁷ | ■ | ■ | ■ | ■ |
| Intelligent Emergency Braking ¹⁵ | ■ | ■ | ■ | |
| Intelligent Emergency Braking with Pedestrian Detection ¹¹ | | | | ■ |
| Lane Departure Warning ¹² | | | | ■ |
| Intelligent Lane Intervention ¹² | | | | ■ |
| 3-point ALR/ELR passenger seat belt system (ELR for driver) | ■ | ■ | ■ | ■ |
| Front seat belts with pretensioners and load limiters | ■ | ■ | ■ | ■ |
| Front-seat and three rear-seat head restraints | ■ | ■ | ■ | ■ |
| LATCH System (Lower Anchors and Tethers for Children) | ■ | ■ | ■ | ■ |
| Energy-absorbing steering column | ■ | ■ | ■ | ■ |
| High-strength steel side-door guard beams | ■ | ■ | ■ | ■ |
| Zone Body construction with front and rear crumple zones | ■ | ■ | ■ | ■ |
| Hood buckling creases | ■ | ■ | ■ | ■ |
| Tire Pressure Monitoring System (TPMS) with individual tire pressure display and Easy-Fill Tire Alert ^{29,30} | ■ | ■ | ■ | ■ |
| Vehicle Security System | ■ | ■ | ■ | ■ |
| Nissan Vehicle Immobilizer System | ■ | ■ | ■ | ■ |

DIMENSIONS/CAPACITIES/WEIGHTS/FUEL

| Exterior Dimensions – mm (Inches) | | | | |
|--|-----------------------|-------------|-------------|-------------|
| Wheelbase | 2825 (111.2) | | | |
| Overall length | 4888 (192.8) | | | |
| Overall width | 1916 (75.4) | | | |
| Overall height | 1722 (67.8) | | | |
| Track width (front and rear) | 1640 (64.6) | | | |
| Interior Dimensions – mm (Inches) | | | | |
| Head room | | | | |
| With moonroof | 967/959 (38.1/37.8) | | | |
| Without moonroof | 1013/1010 (39.9/39.8) | | | |
| Leg room (front/rear) | 1028/981 (40.5/38.7) | | | |
| Shoulder room (front/rear) | 1512/1495 (59.5/58.9) | | | |
| Cargo Dimensions – mm (Inches) | | | | |
| Length with rear seat up | 941 (37) | | | |
| Length with rear seat down | 1889 (74.4) | | | |
| Width | 1092 (43) | | | |
| Height | | | | |
| With moonroof | 808 (31.8) | | | |
| Without moonroof | 856 (33.7) | | | |
| Capacities | | | | |
| Seating capacity | 5 | | | |
| Interior passenger volume – L (cu. ft.) | | | | |
| With moonroof | 2611 (102.8) | | | |
| Without moonroof | 2746 (108.1) | | | |
| Cargo volume – L (cu. ft.) | | | | |
| With rear seat up | 908 (32.1) | | | |
| With rear seat down | 1897 (65) | | | |
| Fuel tank – L (Imp. gal.) | 72 (19) | | | |
| Maximum towing capacity – kg (lbs.) | 680 (1500) | | | |
| Curb Weights – kg (lbs.) | | | | |
| | | | | |
| Base total | S | SV | SL | PLATINUM |
| FWD | 1740 (3836) | – | – | – |
| AWD | – | 1836 (4047) | 1853 (4085) | 1880 (4145) |
| 2019 Fuel Economy Estimates – L/100 km (MPG) | | | | |
| | | | | |
| City/Hwy/MPG | | | | |
| FWD | 11.7/8.3 (24/34) | | | |
| AWD | 11.7/8.5 (24/33) | | | |
| Actual mileage may vary with driving conditions – use for comparison only. | | | | |
| Standard | | | | |

NISSAN MURANO®

Isn't it time you were passionate about the vehicle you drive? Welcome to the 2019 Murano.

Follow Nissan Canada on:







